

SMPD1 / ASM Rabbit pAb

货号: **AYP10693**

产品信息

反应	Human,Mouse,Rat
宿主	Rabbit
克隆性	Polyclonal
预测反应	WB: Homo sapiens
应用	WB IF/ICC
推荐浓度	WB: 1:100 - 1:500 IF/ICC: 1:10 - 1:100
理论分子量	63kDa/64kDa/69kDa
实测分子量	55KDa/70KDa
形式	Liquid
保存条件	Store at -20°C. Avoid freeze / thaw cycles. Buffer: PBS with 0.01% thiomersal,50% glycerol,pH7.3.
偶联物	Unconjugated
阳性对照	HepG2,MCF7
细胞定位	Lysosome
纯化	Affinity purification

抗原信息

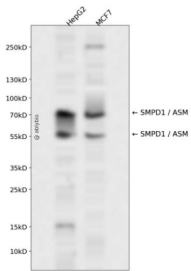
抗原信息	Recombinant fusion protein containing a sequence corresponding to amino acids 70-340 of human SMPD 1 / ASM (NP_000534.3).
序列	PARLHRIVPRLRDVFGWGNLTCPIKGLFTAINLGLKKEPNVARVGSVAIKLCNLLKIAPPVQCQSIVHLFEDDMVEVWRRSV LSPSEACGLLLGSTCGHWDIFSSWNISLPTVPKPPKPPSPPAPGAPVSRILFTDLHWDHDYLEGTDPCADPLCCRRGS GLPPASRPGAGYWGEYSKCDLPLRTLLESLLSGLGAPGPFDMVYWTGDIPAHDVWHQTRQDQLRALTTVTALVRKFLGPV PVYPAVGNHESTPVNSFPPPFIEGNHSS

靶点信息

研究背景	The protein encoded by this gene is a lysosomal acid sphingomyelinase that converts sphingomyelin to ceramide. The encoded protein also has phospholipase C activity. Defects in this gene are a cause of Niemann-Pick disease type A (NPA) and Niemann-Pick disease type B (NPB). Multiple transcript variants encoding different isoforms have been identified.
------	---

基因ID	6609
基因名	SMPD1
Swiss	P17405
别名	SMPD1;ASM;ASMASE;NPD;SMPD1/ASM

产品验证



Western blot analysis of SMPD1 / ASM expressed in HepG2, MCF7 using SMPD1 / ASM Rabbit pAb at 1:1000. Secondary antibody: HRP Goat Anti-Rabbit IgG (H+L) at 1:5000. Lysates/proteins: 30ug per lane. Blocking buffer: 5% non-fat dry milk in TBST. Detection: ECL Enhanced Kit. Exposure time: 120s.

实验步骤

访问官网浏览详情: www.ablybio.cn