

— ABLYBIO, Help Your Research



LAMP1 Rabbit pAb

货号: **AYP10675**

产品信息

反应	Human,Mouse,Rat
宿主	Rabbit
克隆性	Polyclonal
预测反应	IHC: Homo sapiens,Mus musculus WB: Mus musculus
应用	WB IF/ICC
推荐浓度	WB: 1:500 - 1:2000 IF/ICC: 1:50 - 1:200
理论分子量	38kDa/44kDa
实测分子量	45kDa/120kDa
形式	Liquid
保存条件	Store at -20°C. Avoid freeze / thaw cycles. Buffer: PBS with 0.02% sodium azide,50% glycerol,pH7.3.
偶联物	Unconjugated
阳性对照	Mouse liver
细胞定位	Cell membrane,Endosome membrane,Late endosome,Lysosome membrane,Single-pass type I membrane protein
纯化	Affinity purification

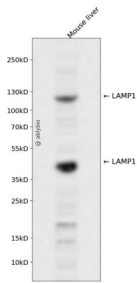
抗原信息

抗原信息	Recombinant fusion protein containing a sequence corresponding to amino acids 51-270 of human LAMP 1 (NP_005552.3).
------	---

靶点信息

研究背景	The protein encoded by this gene is a member of a family of membrane glycoproteins. This glycoprotein provides selectins with carbohydrate ligands. It may also play a role in tumor cell metastasis.
基因ID	3916
基因名	LAMP1
Swiss	P11279 (https://www.uniprot.org/uniprotkb/P11279/entry)
别名	LAMP1,CD107a,LAMPA,LGP120,LAMP1 Rabbit pAb,CD107 antigen-like family member A

产品验证



Western blot analysis of LAMP1 expressed in Mouse liver using LAMP1 Rabbit pAb at 1:1000. Secondary antibody: HRP Goat Anti-Rabbit IgG (H+L) at 1:5000. Lysates/proteins: 30ug per lane. Blocking buffer: 5% non-fat dry milk in TBST. Detection: ECL Enhanced Kit. Exposure time: 120s.

实验步骤

访问官网浏览详情: www.ablybio.cn (<https://www.ablybio.cn/>www.ablybio.cn)