

Dopamine Transporter/SLC6A3 Rabbit pAb

货号: **AYP10663**

产品信息

反应	Human,Mouse,Rat
宿主	Rabbit
克隆性	Polyclonal
预测反应	IHC: Danio rerio WB: Mus musculus
应用	WB IHC IF/ICC
推荐浓度	WB: 1:500 - 1:1000 IHC: 1:50 - 1:100 IF/ICC: 1:50 - 1:200
理论分子量	68kDa
实测分子量	72KDa
形式	Liquid
保存条件	Store at -20°C. Avoid freeze / thaw cycles. Buffer: PBS with 0.01% thiomersal,50% glycerol,pH7.3.
偶联物	Unconjugated
阳性对照	Rat brain
细胞定位	Cell membrane,Multi-pass membrane protein
纯化	Affinity purification

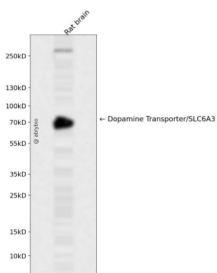
抗原信息

抗原信息	A synthetic peptide corresponding to a sequence within amino acids 500 to the C-terminus of human Dopamine Transporter/SLC6A3 (NP_001035.1).
序列	GVGQFSDDIQMTGQRPSLYWRLCWKLVSFCFLFVVVVSIVTFRPPHYGAYIFPDWANALGWVIATSSMAMVPIYAAYK FCSLPGSFREKLAYIAIPEKDRELVDVRGEVRQFTLRHWLKV

靶点信息

研究背景	This gene encodes a dopamine transporter which is a member of the sodium- and chloride-dependent neurotransmitter transporter family. The 3' UTR of this gene contains a 40 bp tandem repeat, referred to as a variable number tandem repeat or VNTR, which can be present in 3 to 11 copies. Variation in the number of repeats is associated with idiopathic epilepsy, attention-deficit hyperactivity disorder, dependence on alcohol and cocaine, susceptibility to Parkinson disease and protection against nicotine dependence.
基因ID	6531
基因名	SLC6A3
Swiss	Q01959
别名	SLC6A3;DAT;DAT1;PKDYS

产品验证



Western blot analysis of Dopamine Transporter/SLC6A3 expressed in Rat brain using Dopamine Transporter/SLC6A3 Rabbit pAb at 1:1000. Secondary antibody: HRP Goat Anti-Rabbit IgG (H+L) at 1:5000. Lysates/proteins: 30ug per lane. Blocking buffer: 5% non-fat dry milk in TBST. Detection: ECL Enhanced Kit. Exposure time: 120s.

实验步骤

访问官网浏览详情: www.ablybio.cn