

TGF beta Receptor II (TGFBR2) Rabbit pAb

货号: **AYP10651**

产品信息

反应	Human,Mouse,Rat
宿主	Rabbit
克隆性	Polyclonal
预测反应	WB: Homo sapiens , Mus musculus IF: Mus musculus
应用	WB IHC IF/ICC
推荐浓度	WB: 1:500 - 1:1000 IHC: 1:50 - 1:200 IF/ICC: 1:50 - 1:200
理论分子量	64kDa/67kDa
实测分子量	90KDa
形式	Liquid
保存条件	Store at -20°C. Avoid freeze / thaw cycles. Buffer: PBS with 0.01% thiomersal,50% glycerol,pH7.3.
偶联物	Unconjugated
阳性对照	Mouse liver
细胞定位	Cell membrane,Single-pass type I membrane protein
纯化	Affinity purification

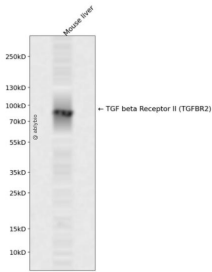
抗原信息

抗原信息	Recombinant fusion protein containing a sequence corresponding to amino acids 237-549 of human TGF beta Receptor II (TGFBR2) (NP_003233.4).
序列	HNTELLPIELDTLVGKGRFAEVYKAKLKQNTSEQFETVAVKIFPYEYASWKTEKDIFSDINLKHENILQFLTAERKTELGKYWLITAFHAKGNLQEYLTRHVISWEDLRKLGSSLARGIAHLHSDHTPCGRPKMPIVHRDLKSSNILVKNDLTCCCLDFGLSLRLDPTLSVDDLANSQVGTARYMAPEVLESRMNLENVESFKQTDVYSMALVLWEMTSRCNAVGEVKDYEPFPGSKVREHPCVESMKDNVLRDRGRPEIPSWLNLHQIQMVCETLTECWDHDPPEARLTAQCVAERFSELEHLDRLSG

靶点信息

研究背景	This gene encodes a member of the Ser/Thr protein kinase family and the TGFβ receptor subfamily. The encoded protein is a transmembrane protein that has a protein kinase domain, forms a heterodimeric complex with another receptor protein, and binds TGF-β. This receptor/ligand complex phosphorylates proteins, which then enter the nucleus and regulate the transcription of a subset of genes related to cell proliferation. Mutations in this gene have been associated with Marfan Syndrome, Loeys-Deitz Aortic Aneurysm Syndrome, and the development of various types of tumors. Alternatively spliced transcript variants encoding different isoforms have been characterized.
基因ID	7048
基因名	TGFBR2
Swiss	P37173
别名	AAT3;FAA3;LDS1B;LDS2;LDS2B;MFS2;RIIC;TAAD2;TGFR-2;TGFβ-RII;TGF β Receptor II;TGFBR2

产品验证



Western blot analysis of TGF beta Receptor II (TGFBR2) expressed in Mouse liver using TGF beta Receptor II (TGFBR2) Rabbit pAb at 1:1000. Secondary antibody: HRP Goat Anti-Rabbit IgG (H+L) at 1:5000. Lysates/proteins: 30ug per lane. Blocking buffer: 5% non-fat dry milk in TBST. Detection: ECL Enhanced Kit. Exposure time: 120s.

实验步骤

访问官网浏览详情: www.ablybio.cn