

# KIFC1 Rabbit pAb

货号: **AYP10643**

## 产品信息

反应	Human,Mouse,Rat
宿主	Rabbit
克隆性	Polyclonal
预测反应	<b>WB:</b> Homo sapiens <b>IHC:</b> Homo sapiens <b>IF:</b> Homo sapiens
应用	<a href="#">WB</a> <a href="#">IHC</a> <a href="#">IF/ICC</a>
推荐浓度	<b>WB:</b> 1:500 - 1:2000 <b>IHC:</b> 1:50 - 1:200 <b>IF/ICC:</b> 1:50 - 1:200
理论分子量	73kDa
实测分子量	74kDa
形式	Liquid
保存条件	Store at -20°C. Avoid freeze / thaw cycles. Buffer: PBS with 0.01% thiomersal,50% glycerol,pH7.3.
偶联物	Unconjugated
阳性对照	Jurkat,HT-29,HeLa,A-549
细胞定位	Cytoplasm,Early endosome,Nucleus,centrosome,cytoskeleton,microtubule organizing center,spindle
纯化	Affinity purification

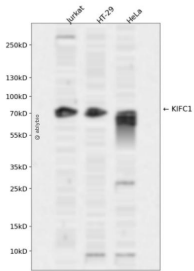
## 抗原信息

抗原信息	Recombinant fusion protein containing a sequence corresponding to amino acids 1-250 of human KIFC1 ( NP_002254.2).
序列	MDPQRSPLLEVKGNIELKRPLIKAPSQLPLSGSRLKRRPDQMEDGLEPEKKRTRGLGATTKITTSHPRVPSLTTVPQTGGQT TAQKVSKKTGPRCSTAIATGLKNQKPVPAVPVQKSGTSGVPPMAGGKKPSKRPAWDLKGQLCDLNAELKRCRERTQTL QENQQLQDQLRDAQQVQKALGTERTTLEGLAKVQAQAEQGQQLKNLRACVLELEERLSTQEGLVQELQKQVELQEE RRGLMSQLEE

## 靶点信息

研究背景	Minus end-directed microtubule-dependent motor required for bipolar spindle formation. May contribute to movement of early endocytic vesicles (By similarity). Regulates cilium formation and structure (By similarity).
基因ID	3833
基因名	KIFC1
Swiss	Q9BW19
别名	KIFC1;HSET;KNSL2

## 产品验证



Western blot analysis of KIFC1 expressed in Jurkat, HT-29, HeLa using KIFC1 Rabbit pAb at 1:1000. Secondary antibody: HRP Goat Anti-Rabbit IgG (H+L) at 1:5000. Lysates/proteins: 30ug per lane. Blocking buffer: 5% non-fat dry milk in TBST. Detection: ECL Enhanced Kit. Exposure time: 120s.

## 实验步骤

访问官网浏览详情: [www.ablybio.cn](http://www.ablybio.cn)