

— ABLYBIO, Help Your Research



AKT2 Rabbit pAb

货号: **AYP10637**

产品信息

反应	Human,Mouse,Rat
宿主	Rabbit
克隆性	Polyclonal
预测反应	WB: Mus musculus , Homo sapiens IHC: Mus musculus
应用	WB IF/ICC
推荐浓度	WB: 1:500 - 1:2000 IF/ICC: 1:50 - 1:200
理论分子量	51kDa/55kDa
实测分子量	65kDa
形式	Liquid
保存条件	Store at -20°C. Avoid freeze / thaw cycles. Buffer: PBS with 0.02% sodium azide,50% glycerol,pH7.3.
偶联物	Unconjugated
阳性对照	HeLa,NIH/3T3
细胞定位	Cell membrane,Cytoplasm,Early endosome,Nucleus,Peripheral membrane protein
纯化	Affinity purification

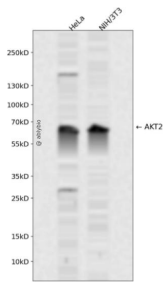
抗原信息

抗原信息	A synthetic peptide corresponding to a sequence within amino acids 400-500 of human AKT2 (NP_001617.1).
------	---

靶点信息

研究背景	This gene is a putative oncogene encoding a protein belonging to a subfamily of serine/threonine kinases containing SH2-like (Src homology 2-like) domains. The gene was shown to be amplified and overexpressed in 2 of 8 ovarian carcinoma cell lines and 2 of 15 primary ovarian tumors. Overexpression contributes to the malignant phenotype of a subset of human ductal pancreatic cancers. The encoded protein is a general protein kinase capable of phosphorylating several known proteins.
基因ID	208
基因名	AKT2
Swiss	P31751 (https://www.uniprot.org/uniprotkb/P31751/entry)
别名	AKT2,HIHGHH,PKBB,PKBBETA,PRKBB,RAC-BETA,AKT2 Rabbit pAb,Protein kinase Akt-2,Protein kinase B beta,RAC protein kinase beta

产品验证



Western blot analysis of AKT2 expressed in HeLa,NIH/3T3 using AKT2 Rabbit pAb at 1:1000. Secondary antibody: HRP Goat Anti-Rabbit IgG (H+L) at 1:5000. Lysates/proteins: 30ug per lane. Blocking buffer: 5% non-fat dry milk in TBST. Detection: ECL Enhanced Kit. Exposure time: 120s.

实验步骤

访问官网浏览详情: www.ablybio.cn (<https://www.ablybio.cn/www.ablybio.cn>)