

— ABLYBIO, Help Your Research



GPER1 Rabbit pAb

货号: **AYP10636**

产品信息

反应	Human,Mouse,Rat
宿主	Rabbit
克隆性	Polyclonal
预测反应	IF: Danio rerio WB: Rattus norvegicus , Mus musculus
应用	WB IF/ICC
推荐浓度	WB: 1:500 - 1:1000 IF/ICC: 1:50 - 1:200
理论分子量	42kDa
实测分子量	52KDa
形式	Liquid
保存条件	Store at -20°C. Avoid freeze / thaw cycles. Buffer: PBS with 0.01% thiomersal,50% glycerol,pH7.3.
偶联物	Unconjugated
阳性对照	Mouse heart
细胞定位	Basolateral cell membrane,Cell junction,Cell membrane,Cell projection,Cytoplasm,Cytoplasmic vesicle membrane,Early endosome,Endoplasmic reticulum membrane,Golgi apparatus,Golgi apparatus membrane,Mitochondrion membrane,Multi-pass membrane protein,Nucleus,Recycling endosome,axon,cytoskeleton,dendrite,dendritic spine membrane,perinuclear region,postsynaptic cell membrane,postsynaptic density,synapse,trans-Golgi network
纯化	Affinity purification

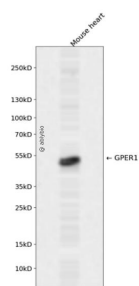
抗原信息

抗原信息	Recombinant fusion protein containing a sequence corresponding to amino acids 307-375 of human GPER1 (Q99527).
------	--

靶点信息

研究背景	This gene is a member of the G-protein coupled receptor 1 family and encodes a multi-pass membrane protein that localizes to the endoplasmic reticulum. The protein binds estrogen, resulting in intracellular calcium mobilization and synthesis of phosphatidylinositol 3,4,5-trisphosphate in the nucleus. This protein therefore plays a role in the rapid nongenomic signaling events widely observed following stimulation of cells and tissues with estrogen. Alternate transcriptional splice variants which encode the same protein have been characterized.
基因ID	2852
基因名	GPER1
Swiss	Q99527 (https://www.uniprot.org/uniprotkb/Q99527/entry)
别名	GPER1,CEPR,CMKRL2,DRY12,FEG-1,GPCR-Br,GPER,GPR30,LERGU,LERGU2,LyGPR,mER,GPER1 Rabbit pAb, Chemoattractant receptor-like 2,Flow-induced endothelial G-protein coupled receptor 1,G protein-coupled estrogen receptor 1,G-protein coupled receptor 30,IL8-related receptor DRY12

产品验证



Western blot analysis of GPER1 expressed in Mouse heart using GPER1 Rabbit pAb at 1:1000. Secondary antibody: HRP Goat Anti-Rabbit IgG (H+L) at 1:5000. Lysates/proteins: 30ug per lane. Blocking buffer: 5% non-fat dry milk in TBST. Detection: ECL Enhanced Kit. Exposure time: 120s.

实验步骤

访问官网浏览详情: www.ablybio.cn (<https://www.ablybio.cn/www.ablybio.cn>)