

# LC3A / LC3B Rabbit pAb

货号: **AYP10632**

## 产品信息

反应	Human,Mouse
宿主	Rabbit
克隆性	Polyclonal
预测反应	<b>WB:</b> Sus scrofa , Rattus norvegicus , Spodoptera frugiperda , Mus musculus
应用	<a href="#">WB</a> <a href="#">IHC</a>
推荐浓度	<b>WB:</b> 1:500 - 1:2000 <b>IHC:</b> 1:50 - 1:200
理论分子量	14kDa
实测分子量	14kDa, 16kDa
形式	Liquid
保存条件	Store at -20°C. Avoid freeze / thaw cycles. Buffer: PBS with 0.02% sodium azide,50% glycerol,pH7.3.
偶联物	Unconjugated
阳性对照	HeLa,NIH/3T3
细胞定位	Cytoplasm,Cytoplasmic vesicle,Endomembrane system,Lipid-anchor,autophagosome,autophagosome membrane,cytoskeleton
纯化	Affinity purification

## 抗原信息

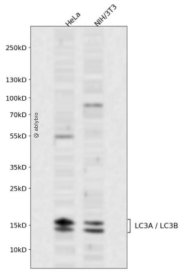
抗原信息	Recombinant fusion protein containing a sequence corresponding to amino acids 1-125 of human LC3A / LC3B (NP_073729.1).
序列	MPSEKTFKQRRTFEQRVEDVRLIREQHPTKIPVIIERYKGEKQLPVLDKTKFLVPDHVNMSELIKIIRRRQLNANQAFFLLVN GHSMVSVSTPISEVYESEKDEDGFLYMVYASQETFGMKLSV

## 靶点信息

研究背景	The product of this gene is a subunit of neuronal microtubule-associated MAP1A and MAP1B proteins, which are involved in microtubule assembly and important for neurogenesis. Studies on the rat homolog implicate a role for this gene in autophagy, a process that involves the bulk degradation of cytoplasmic component.
------	--

基因ID	84557,81631
基因名	MAP1LC3A,MAP1LC3B
Swiss	Q9GZQ8,Q9H492
别名	MAP1LC3B;ATG8F;LC3B;MAP1A/1BLC3;MAP1LC3B-a;MAP1LC3A;ATG8E;LC3;LC3A;MAP1ALC3;MAP1BLC3;LC3A/LC3B

## 产品验证



Western blot analysis of LC3A / LC3B expressed in HeLa,NIH/3T3 using LC3A / LC3B Rabbit pAb at 1:1000. Secondary antibody: HRP Goat Anti-Rabbit IgG (H+L) at 1:5000. Lysates/proteins: 30ug per lane. Blocking buffer: 5% non-fat dry milk in TBST. Detection: ECL Enhanced Kit. Exposure time: 120s.

## 实验步骤

访问官网浏览详情: [www.ablybio.cn](http://www.ablybio.cn)