

CCL20 Rabbit pAb

货号: **AYP10630**

产品信息

反应	Human
宿主	Rabbit
克隆性	Polyclonal
预测反应	WB: Homo sapiens ELISA: Homo sapiens
应用	WB
推荐浓度	WB: 1:500 - 1:2000
理论分子量	10kDa
实测分子量	15kDa
形式	Liquid
保存条件	Store at -20°C. Avoid freeze / thaw cycles. Buffer: PBS with 0.01% thiomersal, 50% glycerol, pH7.3.
偶联物	Unconjugated
阳性对照	K-562, LO2, A-549, BxPC-3
细胞定位	Secreted
纯化	Affinity purification

抗原信息

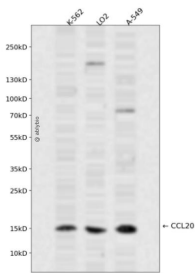
抗原信息	A synthetic peptide corresponding to a sequence within amino acids 1-95 of human CCL20 (NP_001123518.1).
序列	MCCTKSLLLAALMSVLLLHLGGESEASNFDCCCLGYTDRILHPKFIVGFTRQLANEGCDINAIIFHTKKKLSVCANPKQTWVKYIVRLLSKKVKNM

靶点信息

研究背景	This antimicrobial gene belongs to the subfamily of small cytokine CC genes. Cytokines are a family of secreted proteins involved in immunoregulatory and inflammatory processes. The CC cytokines are proteins characterized by two adjacent cysteines. The protein encoded by this gene displays chemotactic activity for lymphocytes and can repress proliferation of myeloid progenitors. Two transcript variants encoding different isoforms have been found for this gene.
------	--

基因ID	6364
基因名	CCL20
Swiss	P78556
别名	CCL20;CKb4;Exodus;LARC;MIP-3-alpha;MIP-3a;MIP3A;SCYA20;ST38

产品验证



Western blot analysis of CCL20 expressed in K-562, LO2, A-549 using CCL20 Rabbit pAb at 1:1000. Secondary antibody: HRP Goat Anti-Rabbit IgG (H+L) at 1:5000. Lysates/proteins: 30ug per lane. Blocking buffer: 5% non-fat dry milk in TBST. Detection: ECL Enhanced Kit. Exposure time: 120s.

实验步骤

访问官网浏览详情: www.ablybio.cn