

KL Rabbit pAb

货号: **AYP10607**

产品信息

反应	Human,Mouse,Rat
宿主	Rabbit
克隆性	Polyclonal
预测反应	WB: Mus musculus , Homo sapiens , Rattus norvegicus IHC: Mus musculus IF: Mus musculus , Homo sapiens
应用	WB
推荐浓度	WB: 1:500 - 1:2000
理论分子量	62kDa/116kDa
实测分子量	65kDa, 120kDa
形式	Liquid
保存条件	Store at -20°C. Avoid freeze / thaw cycles. Buffer: PBS with 0.01% thiomersal,50% glycerol,pH7.3.
偶联物	Unconjugated
阳性对照	DU145,Mouse kidney,Mouse brain,Rat kidney
细胞定位	Cell membrane,Secreted,Single-pass type I membrane protein
纯化	Affinity purification

抗原信息

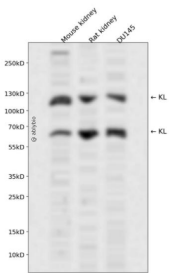
抗原信息	Recombinant fusion protein containing a sequence corresponding to amino acids 1-200 of human KL (NP_004786.2).
序列	MPASAPRRRPRPPPSLSLLLVLGLGRRRLRAEPGDGAQTWARFSRPPAPEAAGLFQGTFFPDGFLWAVGSAAYQTEGG WQQHKGKASIWDTFTHHPLAPPGDSRNASLPLGAPSPQPATGDVASDSYNNVFRDTEALRELGVTHYRFSISWARVLP NGSAGVPNREGLRYRRLLERLRELGVQPVVTLYHWDLPQRL

靶点信息

研究背景	This gene encodes a type-I membrane protein that is related to beta-glucosidases. Reduced production of this protein has been observed in patients with chronic renal failure (CRF), and this may be one of the factors underlying the degenerative processes (e.g., arteriosclerosis, osteoporosis, and skin atrophy) seen in CRF. Also, mutations within this protein have been associated with ageing and bone loss.
------	---

基因ID	9365
基因名	KL
Swiss	Q9UEF7
别名	KL;klotho

产品验证



Western blot analysis of KL expressed in Mouse kidney,Rat kidney,DU145 using KL Rabbit pAb at 1:1000. Secondary antibody: HRP Goat Anti-Rabbit IgG (H+L) at 1:5000. Lysates/proteins: 30ug per lane. Blocking buffer: 5% non-fat dry milk in TBST. Detection: ECL Enhanced Kit. Exposure time: 120s.

实验步骤

访问官网浏览详情: www.ablybio.cn