

— ABLYBIO, Help Your Research



# GLUT4 Rabbit pAb

货号: **AYP10584**

## 产品信息

反应	Human,Mouse,Rat
宿主	Rabbit
克隆性	Polyclonal
预测反应	<b>WB:</b> Mouse heart tissue , Mus musculus , Homo sapiens <b>IHC:</b> Mesocricetus auratus , Homo sapiens <b>ELISA:</b> Mus musculus
应用	WB IHC IF/ICC
推荐浓度	<b>WB:</b> 1:500 - 1:1000 <b>IHC:</b> 1:50 - 1:200 <b>IF/ICC:</b> 1:50 - 1:200
理论分子量	43kDa/54kDa
实测分子量	55KDs
形式	Liquid
保存条件	Store at -20°C. Avoid freeze / thaw cycles. Buffer: PBS with 0.05% proclin300,50% glycerol,pH7.3.
偶联物	Unconjugated
阳性对照	HeLa,RD,Jurkat,NIH/3T3,H9C2
细胞定位	Cell membrane,Cytoplasm,Endomembrane system,Multi-pass membrane protein,perinuclear region
纯化	Affinity purification

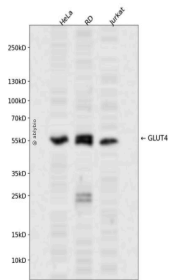
## 抗原信息

抗原信息	A synthetic peptide corresponding to a sequence within amino acids 450-509 of human GLUT4 (NP_001033.1).
------	----------------------------------------------------------------------------------------------------------

## 靶点信息

研究背景	This gene is a member of the solute carrier family 2 (facilitated glucose transporter) family and encodes a protein that functions as an insulin-regulated facilitative glucose transporter. In the absence of insulin, this integral membrane protein is sequestered within the cells of muscle and adipose tissue. Within minutes of insulin stimulation, the protein moves to the cell surface and begins to transport glucose across the cell membrane. Mutations in this gene have been associated with noninsulin-dependent diabetes mellitus (NIDDM).
基因ID	6517
基因名	SLC2A4
Swiss	P14672 ( <a href="https://www.uniprot.org/uniprotkb/P14672/entry">https://www.uniprot.org/uniprotkb/P14672/entry</a> )
别名	SLC2A4, GLUT4, GLUT4 Rabbit pAb, Glucose transporter type 4, insulin-responsive

## 产品验证



Western blot analysis of GLUT4 expressed in HeLa, RD, Jurkat using GLUT4 Rabbit pAb at 1:1000. Secondary antibody: HRP Goat Anti-Rabbit IgG (H+L) at 1:5000. Lysates/proteins: 30ug per lane. Blocking buffer: 5% non-fat dry milk in TBST. Detection: ECL Enhanced Kit. Exposure time: 120s.

## 实验步骤

访问官网浏览详情: [www.ablybio.cn](http://www.ablybio.cn) (<https://www.ablybio.cn/>[www.ablybio.cn](http://www.ablybio.cn))