

— ABLYBIO, Help Your Research



E-Cadherin Rabbit pAb

货号: **AYP10566**

产品信息

反应	Human,Mouse
宿主	Rabbit
克隆性	Polyclonal
预测反应	WB: mouse cells , A549 , Mus musculus , Homo sapiens , Rattus norvegicus IF: Homo sapiens , Mus musculus IHC: Homo sapiens , Mus musculus
应用	WB IHC
推荐浓度	WB: 1:500 - 1:2000 IHC: 1:50 - 1:200
理论分子量	90kDa/97kDa
实测分子量	125kDa
形式	Liquid
保存条件	Store at -20°C. Avoid freeze / thaw cycles. Buffer: PBS with 0.02% sodium azide,50% glycerol,pH7.3.
偶联物	Unconjugated
阳性对照	DU145,Mouse kidney
细胞定位	Cell junction,Cell membrane,Endosome,Golgi apparatus,Single-pass type I membrane protein,trans-Golgi network
纯化	Affinity purification

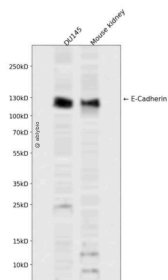
抗原信息

抗原信息	Recombinant fusion protein containing a sequence corresponding to amino acids 373-622 of human E-Cadherin (NP_004351.1).
------	--

靶点信息

研究背景	This gene encodes a classical cadherin of the cadherin superfamily. Alternative splicing results in multiple transcript variants, at least one of which encodes a preproprotein that is proteolytically processed to generate the mature glycoprotein. This calcium-dependent cell-cell adhesion protein is comprised of five extracellular cadherin repeats, a transmembrane region and a highly conserved cytoplasmic tail. Mutations in this gene are correlated with gastric, breast, colorectal, thyroid and ovarian cancer. Loss of function of this gene is thought to contribute to cancer progression by increasing proliferation, invasion, and/or metastasis. The ectodomain of this protein mediates bacterial adhesion to mammalian cells and the cytoplasmic domain is required for internalization. This gene is present in a gene cluster with other members of the cadherin family on chromosome 16.
基因ID	999
基因名	CDH1
Swiss	P12830 (https://www.uniprot.org/uniprotkb/P12830/entry)
别名	Arc-1,CD324,CDHE,ECAD,LCAM,UVO,CDH1,E-Cadherin,E-Cadherin Rabbit pAb,CAM 120/80,Epithelial cadherin,Uvomorulin

产品验证



Western blot analysis of E-Cadherin expressed in DU145, Mouse kidney using E-Cadherin Rabbit pAb at 1:1000. Secondary antibody: HRP Goat Anti-Rabbit IgG (H+L) at 1:5000. Lysates/proteins: 30ug per lane. Blocking buffer: 5% non-fat dry milk in TBST. Detection: ECL Enhanced Kit. Exposure time: 120s.

实验步骤

访问官网浏览详情: www.ablybio.cn (<https://www.ablybio.cn/www.ablybio.cn>)