

# PARG Rabbit pAb

货号: **AYP10436**

## 产品信息

反应	Human,Mouse,Rat
宿主	Rabbit
克隆性	Polyclonal
预测反应	
应用	WB
推荐浓度	<b>WB:</b> 1:100 - 1:500
理论分子量	54kDa/60kDa/99kDa/102kDa/111kDa
实测分子量	111KDa
形式	Liquid
保存条件	Store at -20°C. Avoid freeze / thaw cycles. Buffer: PBS with 0.05% proclin300,50% glycerol,pH7.3.
偶联物	Unconjugated
阳性对照	PC-3
细胞定位	Cytoplasm,Mitochondrion,Mitochondrion matrix,Nucleus
纯化	Affinity purification

## 抗原信息

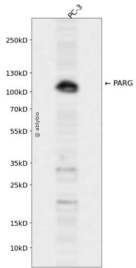
抗原信息	Recombinant fusion protein containing a sequence corresponding to amino acids 777-976 of human PARG (NP_003622.2).
序列	HNECLIITGTEQYSEYTGGAETRWRSRSHEDGSRDDWQRRCTEIVAI DALHFRRYLDQFVPEKMRRELNKAYCGFLRPGV SSENLSAVATGNWGC GAFGGDARLKALIQILAAAAAERDVVYFTFGDSELMRDIYSMHIFLTERKLTVG DVYKLLLRYYNEE CRNCSTPGDPDKLYPFIYHAVESCAETADHSGQRTGT

## 靶点信息

研究背景	Poly(ADP-ribose) glycohydrolase (PARG) is the major enzyme responsible for the catabolism of poly(ADP-ribose), a reversible covalent-modifier of chromosomal proteins. The protein is found in many tissues and may be subject to proteolysis generating smaller, active products. Several transcript variants encoding different isoforms have been found for this gene.
基因ID	8505

基因名	
Swiss	Q86W56
别名	PARG;PARG99

## 产品验证



Western blot analysis of PARG expressed in PC-3 using PARG Rabbit pAb at 1:1000. Secondary antibody: HRP Goat Anti-Rabbit IgG (H+L) at 1:5000. Lysates/proteins: 30ug per lane. Blocking buffer: 5% non-fat dry milk in TBST. Detection: ECL Enhanced Kit. Exposure time: 120s.

## 实验步骤

访问官网浏览详情: [www.ablybio.cn](http://www.ablybio.cn)