

ALDOB Rabbit pAb

货号: **AYP10432**

产品信息

反应	Human,Mouse,Rat
宿主	Rabbit
克隆性	Polyclonal
预测反应	
应用	WB IF/ICC
推荐浓度	WB: 1:500 - 1:1000 IF/ICC: 1:50 - 1:200
理论分子量	39kDa
实测分子量	40KDa
形式	Liquid
保存条件	Store at -20°C. Avoid freeze / thaw cycles. Buffer: PBS with 0.02% sodium azide,50% glycerol,pH7.3.
偶联物	Unconjugated
阳性对照	Mouse liver,Rat liver,Rat kidney
细胞定位	Cytoplasm,centriolar satellite,centrosome,cytoskeleton,microtubule organizing center
纯化	Affinity purification

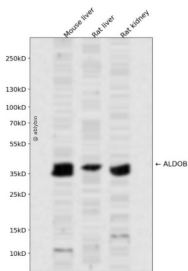
抗原信息

抗原信息	Recombinant fusion protein containing a sequence corresponding to amino acids 1-200 of human ALDOB (NP_000026.2).
序列	MAHRFPALTQEKKELSEIAQSIVANGKILAADSVGTMGNRLQRIKVENTEENRRQFREILFSVDSSINQSIGGVILFHET LYQKDSQGKLFNRNLIKKEGIVVGIKLDQGGAPLAGTNKETTIQGLDGLSERCAQYKKGVDGFGKWRAVLRIADQCPSSLAI QENANALARYASICQNGLVPIVEPEVIPDGDHDLE

靶点信息

研究背景	Fructose-1,6-bisphosphate aldolase (EC 4.1.2.13) is a tetrameric glycolytic enzyme that catalyzes the reversible conversion of fructose-1,6-bisphosphate to glyceraldehyde 3-phosphate and dihydroxyacetone phosphate. Vertebrates have 3 aldolase isozymes which are distinguished by their electrophoretic and catalytic properties. Differences indicate that aldolases A, B, and C are distinct proteins, the products of a family of related 'housekeeping' genes exhibiting developmentally regulated expression of the different isozymes. The developing embryo produces aldolase A, which is produced in even greater amounts in adult muscle where it can be as much as 5% of total cellular protein. In adult liver, kidney and intestine, aldolase A expression is repressed and aldolase B is produced. In brain and other nervous tissue, aldolase A and C are expressed about equally. There is a high degree of homology between aldolase A and C. Defects in ALDOB cause hereditary fructose intolerance.
基因ID	229
基因名	ALDOB
Swiss	P05062
别名	ALDOB;ALDB;ALDO2

产品验证



Western blot analysis of ALDOB expressed in Mouse liver, Rat liver, Rat kidney using ALDOB Rabbit pAb at 1:1000. Secondary antibody: HRP Goat Anti-Rabbit IgG (H+L) at 1:5000. Lysates/proteins: 30ug per lane. Blocking buffer: 5% non-fat dry milk in TBST. Detection: ECL Enhanced Kit. Exposure time: 120s.

实验步骤

访问官网浏览详情: www.ablybio.cn