

# RPS4X Rabbit pAb

货号: **AYP10406**

## 产品信息

反应	Human,Mouse,Rat
宿主	Rabbit
克隆性	Polyclonal
预测反应	<b>WB:</b> Sus scrofa
应用	<a href="#">WB</a>
推荐浓度	<b>WB:</b> 1:100 - 1:500
理论分子量	29kDa
实测分子量	30KDa
形式	Liquid
保存条件	Store at -20°C. Avoid freeze / thaw cycles. Buffer: PBS with 0.02% sodium azide,50% glycerol,pH7.3.
偶联物	Unconjugated
阳性对照	293T,Mouse spleen,Mouse brain
细胞定位	Cytoplasm
纯化	Affinity purification

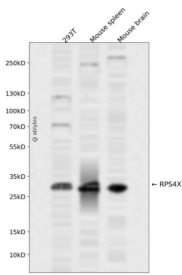
## 抗原信息

抗原信息	Recombinant fusion protein containing a sequence corresponding to amino acids 66-263 of human RPS4X (NP_000998.1).
序列	MQRFIKIDGKVRTDITYPAGFMDVISIDKTGENFRLIYDTKGRFAVHRITPEEAKYKLCKVRKIFVGTGKIPHLVTHDARTIRYP DPLIKVNDTIQIDLETGKITDFIKFDTGNLCMVTGGANLGRIGVITNRERHPGSFDVVHVKDANGNSFATRLSNIFVIGKGN KPWISLPRGKGIRLTIAERDKRLAAKQSSG

## 靶点信息

研究背景	Cytoplasmic ribosomes, organelles that catalyze protein synthesis, consist of a small 40S subunit and a large 60S subunit. Together these subunits are composed of 4 RNA species and approximately 80 structurally distinct proteins. This gene encodes ribosomal protein S4, a component of the 40S subunit. Ribosomal protein S4 is the only ribosomal protein known to be encoded by more than one gene, namely this gene and ribosomal protein S4, Y-linked (RPS4Y). The 2 isoforms encoded by these genes are not identical, but are functionally equivalent. Ribosomal protein S4 belongs to the S4E family of ribosomal proteins. This gene is not subject to X-inactivation. It has been suggested that haploinsufficiency of the ribosomal protein S4 genes plays a role in Turner syndrome; however, this hypothesis is controversial. As is typical for genes encoding ribosomal proteins, there are multiple processed pseudogenes of this gene dispersed throughout the genome.
基因ID	6191
基因名	RPS4X
Swiss	P62701
别名	RPS4X;CCG2;DXS306;RPS4;S4;SCAR;SCR10;X-linked

## 产品验证



Western blot analysis of RPS4X expressed in 293T, Mouse spleen, Mouse brain using RPS4X Rabbit pAb at 1:1000. Secondary antibody: HRP Goat Anti-Rabbit IgG (H+L) at 1:5000. Lysates/proteins: 30ug per lane. Blocking buffer: 5% non-fat dry milk in TBST. Detection: ECL Enhanced Kit. Exposure time: 120s.

## 实验步骤

访问官网浏览详情: [www.ablybio.cn](http://www.ablybio.cn)