

# PPP1CC Rabbit pAb

货号: **AYP10356**

## 产品信息

反应	Human,Mouse,Rat
宿主	Rabbit
克隆性	Polyclonal
预测反应	
应用	WB IF/ICC
推荐浓度	<b>WB:</b> 1:200 - 1:2000 <b>IF/ICC:</b> 1:50 - 1:200
理论分子量	36kDa/38kDa
实测分子量	38kDa
形式	Liquid
保存条件	Store at -20°C. Avoid freeze / thaw cycles. Buffer: PBS with 0.02% sodium azide,50% glycerol,pH7.3.
偶联物	Unconjugated
阳性对照	293T,HL-60,Mouse thymus,Mouse spleen,Rat brain
细胞定位	Chromosome,Cleavage furrow,Cytoplasm,Midbody,Mitochondrion,Nucleus,Nucleus speckle,centromere,kinetochore,nucleolus,nucleoplasm
纯化	Affinity purification

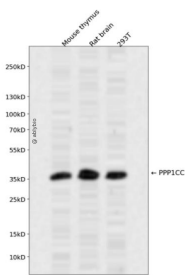
## 抗原信息

抗原信息	Recombinant fusion protein containing a sequence corresponding to amino acids 1-323 of human PPP1CC (NP_002701.1).
序列	MADLDKLNIDSIIQRLLVGRGSKPGKKNVQLQENEIRGLCLKSREIFLSQPILLELEAPLKICGDIHGQYYDLLRLFYGGFPPES NYLFLGDYVDRGKQSLETICLLLAYKIKYPENFFLLRGNHECASINRIYGFYDECKRRYNIKLWKTFTDCFNCLPIAAIVDEKIF CCHGGLSPDLQSMEQIRRMPTDVPDQGLLCDLLWSDPKDVLGWGENDRGVSFTFGAEVVAKFLHKHDLDLICRAH QVVEDGYEFFAKRQLVTLFSAPNYCGEFDNAGAMMSVDETLMCSFQILKPAEKKKPNATRPVTPPRGMITKQAKK

## 靶点信息

研究背景	The protein encoded by this gene belongs to the protein phosphatase family, PP1 subfamily. PP1 is an ubiquitous serine/threonine phosphatase that regulates many cellular processes, including cell division. It is expressed in mammalian cells as three closely related isoforms, alpha, beta/delta and gamma, which have distinct localization patterns. This gene encodes the gamma isozyme. Alternatively spliced transcript variants encoding different isoforms have been found for this gene.
基因ID	5501
基因名	PPP1CC
Swiss	P36873
别名	PPP1CC;PP-1G;PP1C;PPP1G

## 产品验证



Western blot analysis of PPP1CC expressed in Mouse thymus, Rat brain, 293T using PPP1CC Rabbit pAb at 1:1000. Secondary antibody: HRP Goat Anti-Rabbit IgG (H+L) at 1:5000. Lysates/proteins: 30ug per lane. Blocking buffer: 5% non-fat dry milk in TBST. Detection: ECL Enhanced Kit. Exposure time: 120s.

## 实验步骤

访问官网浏览详情: [www.ablybio.cn](http://www.ablybio.cn)