

SAMHD1 Rabbit pAb

货号: **AYP10348**

产品信息

反应	Human,Mouse,Rat
宿主	Rabbit
克隆性	Polyclonal
预测反应	
应用	WB IHC IP
推荐浓度	WB: 1:500 - 1:2000 IHC: 1:50 - 1:200 IP: 1:500 - 1:1000
理论分子量	63kDa/68kDa/72kDa
实测分子量	72kDa
形式	Liquid
保存条件	Store at -20°C. Avoid freeze / thaw cycles. Buffer: PBS with 0.02% sodium azide,50% glycerol,pH7.3.
偶联物	Unconjugated
阳性对照	HepG2,HeLa,MCF-7,Mouse spleen
细胞定位	Nucleus
纯化	Affinity purification

抗原信息

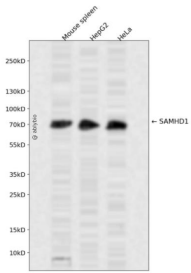
抗原信息	Recombinant fusion protein containing a sequence corresponding to amino acids 387-626 of human SAM HD1 (NP_056289.2).
序列	TDAFLKADDYIEITGAGGKKYRISTAIDDMEAYTKLTDNIFLEILYSTDPKLDAREILKQIEYRNLFKYVGETQPTGQIKIKRE DYESLPKEVASAKPKVLLDVKLKAEDFIVDVINMDYGMQEKNPIDHVSFYCKTAPNRAIRITKNQVSQLLPEKFAEQLIRVYC KKVDRKSLYAARQYFVQWCADRNFTKPDGDVIAPLITPQKKEWNDSTSVQNPTLREASKSRVQLFKDDPM

靶点信息

研究背景	This gene may play a role in regulation of the innate immune response. The encoded protein is upregulated in response to viral infection and may be involved in mediation of tumor necrosis factor-alpha proinflammatory responses. Mutations in this gene have been associated with Aicardi-Goutieres syndrome.
------	--

基因ID	25939
基因名	SAMHD1
Swiss	Q9Y3Z3
别名	SAMHD1;CHBL2;DCIP;HDDC1;MOP-5;SBBI88

产品验证



Western blot analysis of SAMHD1 expressed in Mouse spleen, HepG2, HeLa using SAMHD1 Rabbit pAb at 1:1000. Secondary antibody: HRP Goat Anti-Rabbit IgG (H+L) at 1:5000. Lysates/proteins: 30ug per lane. Blocking buffer: 5% non-fat dry milk in TBST. Detection: ECL Enhanced Kit. Exposure time: 120s.

实验步骤

访问官网浏览详情: www.ablybio.cn