

# MAPK6 Rabbit pAb

货号: **AYP10342**

## 产品信息

反应	Human,Mouse,Rat
宿主	Rabbit
克隆性	Polyclonal
预测反应	
应用	WB IHC IF/ICC
推荐浓度	<b>WB:</b> 1:200 - 1:2000 <b>IHC:</b> 1:50 - 1:200 <b>IF/ICC:</b> 1:50 - 1:200
理论分子量	82kDa
实测分子量	120kDa
形式	Liquid
保存条件	Store at -20°C. Avoid freeze / thaw cycles. Buffer: PBS with 0.01% thiomersal,50% glycerol,pH7.3.
偶联物	Unconjugated
阳性对照	U-251MG,A549,LO2,BxPC-3,293T,Mouse brain
细胞定位	Cytoplasm,Nucleus
纯化	Affinity purification

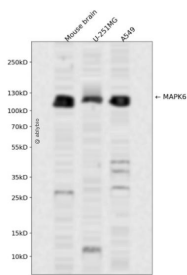
## 抗原信息

抗原信息	Recombinant fusion protein containing a sequence corresponding to amino acids 372-721 of human MAP K6 (NP_002739.1).
序列	NFDIDEVQLDPRALSDVTDEEEVQVDPKYL DGDREKYLEDPAFDTNYSTEP CWQYSDHHENKYCDLECSHTCNYKTRS SSYLDNLVWRESEVNHYEYEPKLIIDLSNWKEQSKEKSDKKGKSKCERNGLVKAQIALEEASQQLAGKEREKNQGFDFDSF IAGTIQLSSQHEPTDVVDKLNLDLNSVSQLELKSLSKSVSQEKQEGMANLAQLEALYQSSWDSQFVSGGEDCFFINQF CEVRKDEQVEKENTYTSYLDKFFSRKEDTEMLETEPVEDGKLGGERGHEEGFLNNSGEFLFNKQLESIGIPQFHSPVGSPLK SIQATLTSPAMKSSPQIPHQTYSSILKHLN

## 靶点信息

研究背景	The protein encoded by this gene is a member of the Ser/Thr protein kinase family, and is most closely related to mitogen-activated protein kinases (MAP kinases). MAP kinases also known as extracellular signal-regulated kinases (ERKs), are activated through protein phosphorylation cascades and act as integration points for multiple biochemical signals. This kinase is localized in the nucleus, and has been reported to be activated in fibroblasts upon treatment with serum or phorbol esters.
基因ID	5597
基因名	MAPK6
Swiss	Q16659
别名	MAPK6;ERK3;HsT17250;PRKM6;p97MAPK

## 产品验证



Western blot analysis of MAPK6 expressed in Mouse brain,U-251MG,A549 using MAPK6 Rabbit pAb at 1:1000. Secondary antibody: HRP Goat Anti-Rabbit IgG (H+L) at 1:5000. Lysates/proteins: 30ug per lane. Blocking buffer: 5% non-fat dry milk in TBST. Detection: ECL Enhanced Kit. Exposure time: 120s.

## 实验步骤

访问官网浏览详情: [www.ablybio.cn](http://www.ablybio.cn)