

# ARHGEF1 Rabbit pAb

货号: **AYP10340**

## 产品信息

反应	Human,Rat
宿主	Rabbit
克隆性	Polyclonal
预测反应	
应用	WB IHC IF/ICC
推荐浓度	<b>WB:</b> 1:500 - 1:2000 <b>IHC:</b> 1:50 - 1:100 <b>IF/ICC:</b> 1:50 - 1:200
理论分子量	98kDa/102kDa/104kDa/105kDa
实测分子量	115kDa
形式	Liquid
保存条件	Store at -20°C. Avoid freeze / thaw cycles. Buffer: PBS with 0.01% thiomersal,50% glycerol,pH7.3.
偶联物	Unconjugated
阳性对照	HeLa,Jurkat,LO2
细胞定位	Cytoplasm,Membrane
纯化	Affinity purification

## 抗原信息

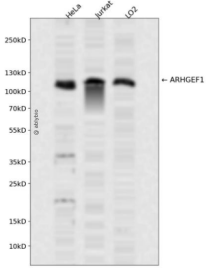
抗原信息	Recombinant fusion protein containing a sequence corresponding to amino acids 783-912 of human ARH GEF1 (NP_004697.2).
序列	PLLSSSENGNGGRETSPADARTERILSDLLPFCRPGPEGQLAATALRKVLSLKQLLFPAAEEDNGAGPPRDGDGVPGGGPL SPARTQEIQENLLSLEETMKQLEEEEFCLRLPILLSQLGGNSVPQGCT

## 靶点信息

研究背景	Rho GTPases play a fundamental role in numerous cellular processes that are initiated by extracellular stimuli that work through G protein coupled receptors. The encoded protein may form complex with G proteins and stimulate Rho-dependent signals. Multiple alternatively spliced transcript variants have been found for this gene, but the full-length nature of some variants has not been defined.
------	---

基因ID	9138
基因名	ARHGEF1
Swiss	Q92888
别名	ARHGEF1;GEF1;LBCL2;LSC;P115-RHOGEF;SUB1.5

## 产品验证



Western blot analysis of ARHGEF1 expressed in HeLa, Jurkat, LO2 using ARHGEF1 Rabbit pAb at 1:1000. Secondary antibody: HRP Goat Anti-Rabbit IgG (H+L) at 1:5000. Lysates/proteins: 30ug per lane. Blocking buffer: 5% non-fat dry milk in TBST. Detection: ECL Enhanced Kit. Exposure time: 120s.

## 实验步骤

访问官网浏览详情: [www.ablybio.cn](http://www.ablybio.cn)