

# APEX1/APE1 Rabbit pAb

货号: AYP10330

## 产品信息

反应	Human
宿主	Rabbit
克隆性	Polyclonal
预测反应	<b>WB:</b> Homo sapiens
应用	WB IF/ICC IP
推荐浓度	<b>WB:</b> 1:500 - 1:2000 <b>IF/ICC:</b> 1:50 - 1:100 <b>IP:</b> 1:50 - 1:200
理论分子量	35kDa
实测分子量	39kDa
形式	Liquid
保存条件	Store at -20°C. Avoid freeze / thaw cycles. Buffer: PBS with 0.02% sodium azide,50% glycerol,pH7.3.
偶联物	Unconjugated
阳性对照	HeLa,HepG2
细胞定位	Cytoplasm,Endoplasmic reticulum,Mitochondrion,Nucleus,Nucleus speckle,nucleolus
纯化	Affinity purification

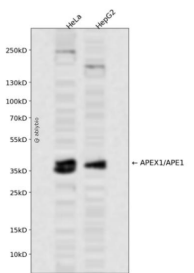
## 抗原信息

抗原信息	Recombinant fusion protein containing a sequence corresponding to amino acids 1-318 of human APEX1/APE1 (NP_542380.1).
序列	MPKRGKKGAVAEDGDDELRTPEAKKSKTAAKNDKEAAGEGALYEDPPDQKTSPSGKPATLKICSWNV DGLRAWIKKK GLDWVKEEAPDILCLQETKCSENKLP AELQELPGLSHQYWSAPSDKEGYSGVGLLSRQCPLKVSYGIGDEEHDQEGRVIV AEFDSFVLVTAYVPNAGRGLVRLEYRQRWDEAFRKFLKGLASRKPLVLCGDLNVAHEEIDLRNPKGNKKNAGFTPQERQG FGELLQAVPLADSRHLYPNTPYAYTFWTYMMNARSKNVGVWRLDYFLLSHSLLPALCDSKIRSKALGSDHCPITLYLAL

## 靶点信息

研究背景	Apurinic/apyrimidinic (AP) sites occur frequently in DNA molecules by spontaneous hydrolysis, by DNA damaging agents or by DNA glycosylases that remove specific abnormal bases. AP sites are pre-mutagenic lesions that can prevent normal DNA replication so the cell contains systems to identify and repair such sites. Class II AP endonucleases cleave the phosphodiester backbone 5' to the AP site. This gene encodes the major AP endonuclease in human cells. Splice variants have been found for this gene; all encode the same protein.
基因ID	328
基因名	APEX1
Swiss	P27695
别名	APEX1;APE;APE1;APEN;APEX;APX;HAP1;REF1

## 产品验证



Western blot analysis of APEX1/APE1 expressed in HeLa,HepG2 using APEX1/APE1 Rabbit pAb at 1:1000. Secondary antibody: HRP Goat Anti-Rabbit IgG (H+L) at 1:5000. Lysates/proteins: 30ug per lane. Blocking buffer: 5% non-fat dry milk in TBST. Detection: ECL Enhanced Kit. Exposure time: 120s.

## 实验步骤

访问官网浏览详情: [www.ablybio.cn](http://www.ablybio.cn)