

EEF1B2 Rabbit pAb

货号: AYP10327

产品信息

反应	Human,Mouse,Rat
宿主	Rabbit
克隆性	Polyclonal
预测反应	IP: Homo sapiens
应用	WB IHC IF/ICC
推荐浓度	WB: 1:500 - 1:2000 IHC: 1:50 - 1:200 IF/ICC: 1:50 - 1:200
理论分子量	24kDa
实测分子量	33kDa
形式	Liquid
保存条件	Store at -20°C. Avoid freeze / thaw cycles. Buffer: PBS with 0.02% sodium azide,50% glycerol,pH7.3.
偶联物	Unconjugated
阳性对照	MCF-7,HL-60,HeLa,293T,Mouse pancreas
细胞定位	cytoplasm,cytosol,eukaryotic translation elongation factor 1 complex
纯化	Affinity purification

抗原信息

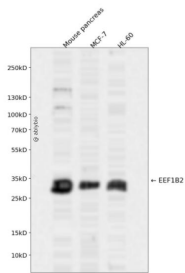
抗原信息	Recombinant fusion protein containing a sequence corresponding to amino acids 1-225 of human EEF1B2 (NP_001032752.1).
序列	MGFGDLKSPAGLQVLNDYLADKSYIEGYVPSQADVAVFEAVSSPPPADLCHALRWYNHIKSYEKEKASLPGVKKALGKYG PADVEDTTGSGATDSKDDDDIDLFGSDDEEESEEAKRLREERLAQYESKKAKKPALVAKSSILLDVKPWDDDETDMAKLEE CVRSIQADGLVWGSSKLVPGYGIKKLQICVVEDDKVGTDMLEEQITAFEDYVQSM DVAAFNKI

靶点信息

研究背景	This gene encodes a translation elongation factor. The protein is a guanine nucleotide exchange factor involved in the transfer of aminoacylated tRNAs to the ribosome. Alternative splicing results in three transcript variants which differ only in the 5' UTR.
------	--

基因ID	1933
基因名	EEF1B2
Swiss	P24534
别名	EEF1B2;EEF1B;EEF1B1;EF1B

产品验证



Western blot analysis of EEF1B2 expressed in Mouse pancreas, MCF-7, HL-60 using EEF1B2 Rabbit pAb at 1:1000. Secondary antibody: HRP Goat Anti-Rabbit IgG (H+L) at 1:5000. Lysates/proteins: 30ug per lane. Blocking buffer: 5% non-fat dry milk in TBST. Detection: ECL Enhanced Kit. Exposure time: 120s.

实验步骤

访问官网浏览详情: www.ablybio.cn