

— ABLYBIO, Help Your Research



Galectin 3/LGALS3 Rabbit pAb

货号: **AYP10322**

产品信息

反应	Human,Mouse,Rat
宿主	Rabbit
克隆性	Polyclonal
预测反应	WB: mouse cells IF: Mus musculus
应用	WB IF/ICC
推荐浓度	WB: 1:500 - 1:2000 IF/ICC: 1:50 - 1:200
理论分子量	26kDa
实测分子量	28KDa
形式	Liquid
保存条件	Store at -20°C. Avoid freeze / thaw cycles. Buffer: PBS with 0.01% thiomersal,50% glycerol,pH7.3.
偶联物	Unconjugated
阳性对照	HeLa,U-87MG,C2C12,Neuro-2a,Rat spleen,Rat lung
细胞定位	Cytoplasm,Nucleus,Secreted
纯化	Affinity purification

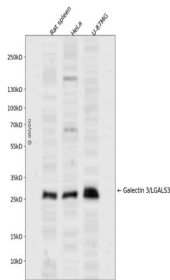
抗原信息

抗原信息	Recombinant fusion protein containing a sequence corresponding to amino acids 1-1-250 of human Galectin 3/Galectin 3/LGALS3 (NP_002297.2).
------	--

靶点信息

研究背景	This gene encodes a member of the galectin family of carbohydrate binding proteins. Members of this protein family have an affinity for beta-galactosides. The encoded protein is characterized by an N-terminal proline-rich tandem repeat domain and a single C-terminal carbohydrate recognition domain. This protein can self-associate through the N-terminal domain allowing it to bind to multivalent saccharide ligands. This protein localizes to the extracellular matrix, the cytoplasm and the nucleus. This protein plays a role in numerous cellular functions including apoptosis, innate immunity, cell adhesion and T-cell regulation. The protein exhibits antimicrobial activity against bacteria and fungi. Alternate splicing results in multiple transcript variants.
基因ID	3958
基因名	LGALS3
Swiss	P17931 (https://www.uniprot.org/uniprotkb/P17931/entry)
别名	LGALS3,CBP35,GAL3,GALBP,GALIG,L31,LGALS2,MAC2,Galectin 3/LGALS3 Rabbit pAb,35 kDa lectin,Carbohydrate-binding protein 35,Galactose-specific lectin 3,Galactoside-binding protein,IgE-binding protein,L-31,Laminin-binding protein,Lectin L-29,Mac-2 antigen

产品验证



Western blot analysis of Galectin 3/LGALS3 expressed in Rat spleen, HeLa, U-87MG using Galectin 3/LGALS3 Rabbit pAb at 1:1000. Secondary antibody: HRP Goat Anti-Rabbit IgG (H+L) at 1:5000. Lysates/proteins: 30ug per lane. Blocking buffer: 5% non-fat dry milk in TBST. Detection: ECL Enhanced Kit. Exposure time: 120s.

实验步骤

访问官网浏览详情: www.ablybio.cn (<https://www.ablybio.cn/www.ablybio.cn>)