

— ABLYBIO, Help Your Research



Bcl10 Rabbit pAb

货号: **AYP10318**

产品信息

反应	Human,Mouse,Rat
宿主	Rabbit
克隆性	Polyclonal
预测反应	WB: Homo sapiens IF: Homo sapiens
应用	WB
推荐浓度	WB: 1:500 - 1:2000
理论分子量	26kDa
实测分子量	30KDa
形式	Liquid
保存条件	Store at -20°C. Avoid freeze / thaw cycles. Buffer: PBS with 0.02% sodium azide,50% glycerol,pH7.3.
偶联物	Unconjugated
阳性对照	Raji,Mouse spleen,Rat spleen
细胞定位	Cytoplasm,Membrane raft,perinuclear region
纯化	Affinity purification

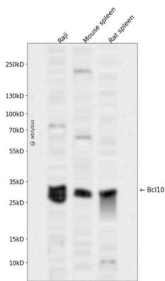
抗原信息

抗原信息	Recombinant fusion protein containing a sequence corresponding to amino acids 1-233 of human Bcl10 (NP_003912.1).
------	---

靶点信息

研究背景	This gene was identified by its translocation in a case of mucosa-associated lymphoid tissue (MALT) lymphoma. The protein encoded by this gene contains a caspase recruitment domain (CARD), and has been shown to induce apoptosis and to activate NF-kappaB. This protein is reported to interact with other CARD domain containing proteins including CARD9, 10, 11 and 14, which are thought to function as upstream regulators in NF-kappaB signaling. This protein is found to form a complex with MALT1, a protein encoded by another gene known to be translocated in MALT lymphoma. MALT1 and this protein are thought to synergize in the activation of NF-kappaB, and the deregulation of either of them may contribute to the same pathogenetic process that leads to the malignancy. Alternative splicing results in multiple transcript variants.
基因ID	8915
基因名	BCL10
Swiss	O95999 (https://www.uniprot.org/uniprotkb/O95999/entry)
别名	BCL10,CARMEN,CIPER,CLAP,IMD37,c-E10,mE10,Bcl10 Rabbit pAb,B-cell CLL/lymphoma 10,CARD-containing molecule enhancing NF-kappa-B,CARD-like apoptotic protein,CED-3/ICH-1 prodomain homologous E10-like regulator,Cellular homolog of vCARMEN,Cellular-E10

产品验证



Western blot analysis of Bcl10 expressed in Raji, Mouse spleen, Rat spleen using Bcl10 Rabbit pAb at 1:1000. Secondary antibody: HRP Goat Anti-Rabbit IgG (H+L) at 1:5000. Lysates/proteins: 30ug per lane. Blocking buffer: 5% non-fat dry milk in TBST. Detection: ECL Enhanced Kit. Exposure time: 120s.

实验步骤

访问官网浏览详情: www.ablybio.cn (<https://www.ablybio.cn/>www.ablybio.cn)