

— ABLYBIO, Help Your Research



TMPO Rabbit pAb

货号: **AYP10307**

产品信息

反应	Human,Mouse,Rat
宿主	Rabbit
克隆性	Polyclonal
预测反应	IHC: Human lung cancer cell WB: Human lung cancer cell , Mus musculus IF: Mus musculus
应用	WB IHC IF/ICC
推荐浓度	WB: 1:100 - 1:500 IHC: 1:50 - 1:200 IF/ICC: 1:50 - 1:200
理论分子量	38kDa/50kDa/75kDa
实测分子量	80KDa/51KDa
形式	Liquid
保存条件	Store at -20°C. Avoid freeze / thaw cycles. Buffer: PBS with 0.05% proclin300,50% glycerol,pH7.3.
偶联物	Unconjugated
阳性对照	HeLa
细胞定位	Chromosome,Nucleus
纯化	Affinity purification

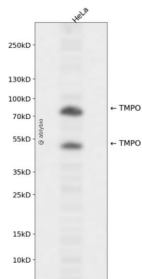
抗原信息

抗原信息	Recombinant fusion protein containing a sequence corresponding to amino acids 1-410 of human TMPO (NP_001027454.1).
------	---

靶点信息

研究背景	The protein encoded by this gene resides in the nucleus and may play a role in the assembly of the nuclear lamina, and thus help maintain the structural organization of the nuclear envelope. It may function as a receptor for the attachment of lamin filaments to the inner nuclear membrane. Mutations in this gene are associated with dilated cardiomyopathy. Alternatively spliced transcript variants encoding different isoforms have been noted for this gene.
基因ID	7112
基因名	TMPO
Swiss	P42166 (https://www.uniprot.org/uniprotkb/P42166/entry), P42167 (https://www.uniprot.org/uniprotkb/P42167/entry)
别名	TMPO,CMD1T,LAP2,LEMD4,PRO0868,TP,TMPO Rabbit pAb,Thymopoietin isoform alpha,Thymopoietin-related peptide isoform alpha,Splenin,TP5,Thymopoietin,isoforms beta/gamma,Thymopoietin-related peptide isoforms beta/gamma

产品验证



Western blot analysis of TMPO expressed in HeLa using TMPO Rabbit pAb at 1:1000. Secondary antibody: HRP Goat Anti-Rabbit IgG (H+L) at 1:5000. Lysates/proteins: 30ug per lane. Blocking buffer: 5% non-fat dry milk in TBST. Detection: ECL Enhanced Kit. Exposure time: 120s.

实验步骤

访问官网浏览详情: www.ablybio.cn (<https://www.ablybio.cn/www.ablybio.cn>)