

TCP1 beta Rabbit mAb

货号: **AYM31460**

产品信息

反应	Human,Mouse,Rat
宿主	Rabbit
克隆性	Monoclonal
预测反应	
应用	WB IHC IF/ICC IP FC
推荐浓度	WB: 1:500 - 1:2000 IHC: 1:50 - 1:200 IF/ICC: 1:50 - 1:200 IP: 1:20 - 1:50 FC: 1:20 - 1:50
理论分子量	52kDa/57kDa
实测分子量	57kDa
形式	Liquid
保存条件	Store at -20°C. Avoid freeze / thaw cycles. Buffer: PBS with 0.75% BSA,50% glycerol,pH7.3.
偶联物	Unconjugated
阳性对照	MCF7,SKOV3,A-549,HT-29,Mouse spleen,Mouse ovary,Mouse heart
细胞定位	Cytoplasm
纯化	Affinity purification

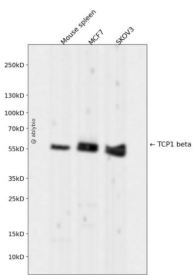
抗原信息

抗原信息	Recombinant fusion protein corresponding to Human TCP1 beta.
序列	GGSLADSYLDEGFLLDKKIGVNPQKRIENAKILIAN TGMDTDKIKIFGSRVVRVDSTAKVAEIEHAEKEKMKEKVERILKHGIN CFINRQLIYNYPEQLFGAAGVMAIEHADFAGVERLALVTGG EIASTFDHPVLKLG SCKLIEEVMIGEDKLIHFSGVALGEACT IVLRGATQQILDEAERSLHDALCVLAQTVKDSRTVYGGGCSEMLMAHAVTQLANRTPGKEAVAMESYAKALRMLPTIIADN AGYDSADLVAQLRAAHSEGNTTAGLDMREGTIGDMAILGITESFQVKRQVLLSAAEAAEVILRVDNIIKAAPRKRVPDHHPC

靶点信息

研究背景	The protein encoded by this gene is a molecular chaperone that is a member of the chaperonin containing TCP1 complex (CCT), also known as the TCP1 ring complex (TRiC). This complex consists of two identical stacked rings, each containing eight different proteins. Unfolded polypeptides enter the central cavity of the complex and are folded in an ATP-dependent manner. The complex folds various proteins, including actin and tubulin. Two transcript variants encoding different isoforms have been found for this gene.
基因ID	10576
基因名	CCT2
Swiss	P78371
别名	CCT2;99D8.1;CCT-beta;CCTB;HEL-S-100n;PRO1633;TCP-1-beta

产品验证



Western blot analysis of TCP1 beta expressed in Mouse spleen, MCF7, SKOV3 using TCP1 beta Rabbit m Ab at 1:1000. Secondary antibody: HRP Goat Anti-Rabbit IgG (H+L) at 1:5000. Lysates/proteins: 30ug per lane. Blocking buffer: 5% non-fat dry milk in TBST. Detection: ECL Enhanced Kit. Exposure time: 12 0s.

实验步骤

访问官网浏览详情: www.ablybio.cn