

PGP9.5 Rabbit mAb

货号: **AYM31455**

产品信息

反应	Human,Mouse,Rat
宿主	Rabbit
克隆性	Monoclonal
预测反应	
应用	WB IHC IF/ICC IP FC
推荐浓度	WB: 1:500 - 1:2000 IHC: 1:50 - 1:200 IF/ICC: 1:50 - 1:200 IP: 1:20 - 1:50 FC: 1:20 - 1:50
理论分子量	25kDa
实测分子量	25kDa
形式	Liquid
保存条件	Store at -20°C. Avoid freeze / thaw cycles. Buffer: PBS with 0.75% BSA,50% glycerol,pH7.3.
偶联物	Unconjugated
阳性对照	293T,DU145,SH-SY5Y,A-549,Mouse brain,Rat brain
细胞定位	Cytoplasm,Endoplasmic reticulum membrane,Lipid-anchor
纯化	Affinity purification

抗原信息

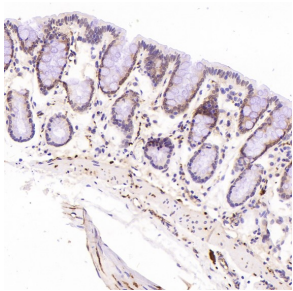
抗原信息	Recombinant fusion protein corresponding to Human PGP9.5.
序列	MLQKPMEINPEMLNKVLSRLGVAGQWRFVDVLGLEEESLGSVPAPACALLLLFPLTAQHENFRKKQIEELKGQEVSPKVYF MKQTIGNSCGTIGLIHAVANNQDKLGFEDGSVLKQFLSETEKMSPEDRAKCFEKNEAIQAAHDAVAQEGQCRVDDKVN HFILFNNVDGHLIELDGRMPFPVNHGASSEDLLKDAKVCREFTEREQGEVRFSAVALC

靶点信息

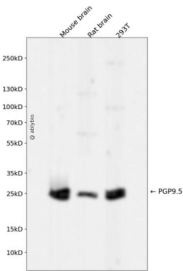
研究背景	The protein encoded by this gene belongs to the peptidase C12 family. This enzyme is a thiol protease that hydrolyzes a peptide bond at the C-terminal glycine of ubiquitin. This gene is specifically expressed in the neurons and in cells of the diffuse neuroendocrine system. Mutations in this gene may be associated with Parkinson disease.[provided by RefSeq, Sep 2009]
------	-----------------------------------------------------------------------------------------------------------------------------------------------------------------------------------------------------------------------------------------------------------------------------------------------------------------------------------------------------------------------------------

基因ID	7345
基因名	UCHL1
Swiss	P09936
别名	HEL-117;HEL-S-53;NDGOA;PARK5;PGP 9.5;PGP9.5;PGP95;SPG79;Uch-L1;UCHL1

产品验证



Immunohistochemical analysis of paraffin-embedded Rat stomach, using the Antibody at 1:500 dilution.



Western blot analysis of PGP9.5 expressed in Mouse brain,Rat brain,293T using PGP9.5 Rabbit mAb at 1:1000. Secondary antibody: HRP Goat Anti-Rabbit IgG (H+L) at 1:5000. Lysates/proteins: 30ug per lane. Blocking buffer: 5% non-fat dry milk in TBST. Detection: ECL Enhanced Kit. Exposure time: 120s.

实验步骤

访问官网浏览详情: www.ablybio.cn