

Aldolase Rabbit mAb

货号: **AYM31453**

产品信息

反应	Human,Mouse,Rat
宿主	Rabbit
克隆性	Monoclonal
预测反应	
应用	WB IHC IF/ICC
推荐浓度	WB: 1:500 - 1:2000 IHC: 1:50 - 1:200 IF/ICC: 1:50 - 1:200
理论分子量	39kDa/45kDa
实测分子量	39kDa
形式	Liquid
保存条件	Store at -20°C. Avoid freeze / thaw cycles. Buffer: PBS with 0.75% BSA,50% glycerol,pH7.3.
偶联物	Unconjugated
阳性对照	MCF7,DU145,293T,HepG2,Jurkat,A-549,CEM,Mouse skeletal muscle,Mouse kidney
细胞定位	Cytoplasm,I band,M line,myofibril,sarcomere
纯化	Affinity purification

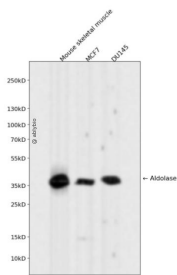
抗原信息

抗原信息	Recombinant fusion protein corresponding to Human Aldolase.
序列	MPYQYPALTPSEQKKELSDIAHRIVAPGKGIILAADESTGSIKRLQSIGTENTEENRRFYRQLLLTADDRVNPCIGGVILFHETLYQKADDGRFPQVIKSKGGVVGIVDKGVVPLAGTNGETTTQGLDGLSERCAQYKKGADFAKWRCVLKIGEHTPSALAIMENANVLARYASICQQNGIVPIVEPEILPDGDHDLKRCQYVTEKVLAAVYKALSDHHIYLEGTLLKPNMVTDPGHACTQKFSHEEIAMATVTALRRTPPAVTGITFLSGGQSEEEASINLNAINKCPLLKPWALTFSYGRALQASALKAWGGKKNLKAQEYVKRALANSLACQGKYTPSGQ

靶点信息

研究背景	The protein encoded by this gene, Aldolase A (fructose-bisphosphate aldolase), is a glycolytic enzyme that catalyzes the reversible conversion of fructose-1,6-bisphosphate to glyceraldehyde 3-phosphate and dihydroxyacetone phosphate. Three aldolase isozymes (A, B, and C), encoded by three different genes, are differentially expressed during development. Aldolase A is found in the developing embryo and is produced in even greater amounts in adult muscle. Aldolase A expression is repressed in adult liver, kidney and intestine and similar to aldolase C levels in brain and other nervous tissue. Aldolase A deficiency has been associated with myopathy and hemolytic anemia. Alternative splicing and alternative promoter usage results in multiple transcript variants. Related pseudogenes have been identified on chromosomes 3 and 10.
基因ID	226
基因名	ALDOA
Swiss	P04075
别名	ALDOA;ALDA;GSD12;HEL-S-87p

产品验证



Western blot analysis of Aldolase expressed in Mouse skeletal muscle, MCF7, DU145 using Aldolase Rabbit mAb at 1:1000. Secondary antibody: HRP Goat Anti-Rabbit IgG (H+L) at 1:5000. Lysates/proteins: 30ug per lane. Blocking buffer: 5% non-fat dry milk in TBST. Detection: ECL Enhanced Kit. Exposure time: 120s.

实验步骤

访问官网浏览详情: www.ablybio.cn