

MSI2 Rabbit mAb

货号: **AYM31443**

产品信息

反应	Human,Mouse,Rat
宿主	Rabbit
克隆性	Monoclonal
预测反应	
应用	WB IHC IF/ICC FC
推荐浓度	WB: 1:500 - 1:2000 IHC: 1:50 - 1:200 IF/ICC: 1:50 - 1:200 FC: 1:20 - 1:50
理论分子量	17kDa/28kDa/35kDa
实测分子量	35kDa
形式	Liquid
保存条件	Store at -20°C. Avoid freeze / thaw cycles. Buffer: PBS with 0.75% BSA,50% glycerol,pH7.3.
偶联物	Unconjugated
阳性对照	Mouse brain
细胞定位	Cytoplasm
纯化	Affinity purification

抗原信息

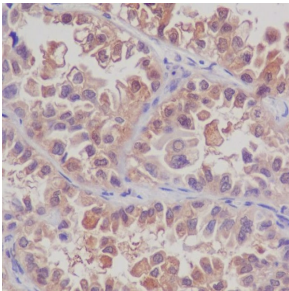
抗原信息	Recombinant fusion protein corresponding to Human MSI2.
序列	MEANGSQGTSGSANDSQHDPGKMFIGGLSWQTSPDSLRYFSKFGEIRECMVMRDPTTKRSRGFGVTFADPASVDKVLG

靶点信息

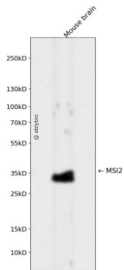
研究背景	This gene encodes an RNA-binding protein that is a member of the Musashi protein family. The encoded protein is transcriptional regulator that targets genes involved in development and cell cycle regulation. Mutations in this gene are associated with poor prognosis in certain types of cancers. This gene has also been shown to be rearranged in certain cancer cells.
------	--

基因ID	124540
基因名	MSI2
Swiss	Q96DH6
别名	MSI2;MSI2H

产品验证



Immunohistochemical analysis of paraffin-embedded human lung carcinoma, using MSI2 Antibody.



Western blot analysis of MSI2 expressed in Mouse brain using MSI2 Rabbit mAb at 1:1000. Secondary antibody: HRP Goat Anti-Rabbit IgG (H+L) at 1:5000. Lysates/proteins: 30ug per lane. Blocking buffer: 5% non-fat dry milk in TBST. Detection: ECL Enhanced Kit. Exposure time: 120s.

实验步骤

访问官网浏览详情: www.ablybio.cn