

Islet1 Rabbit mAb

货号: **AYM31433**

产品信息

反应	Human
宿主	Rabbit
克隆性	Monoclonal
预测反应	
应用	WB IHC IF/ICC IP FC
推荐浓度	WB: 1:500 - 1:2000 IHC: 1:50 - 1:200 IF/ICC: 1:50 - 1:200 IP: 1:20 - 1:50 FC: 1:20 - 1:50
理论分子量	39kDa
实测分子量	39kDa
形式	Liquid
保存条件	Store at -20°C. Avoid freeze / thaw cycles. Buffer: PBS with 0.75% BSA,50% glycerol,pH7.3.
偶联物	Unconjugated
阳性对照	HeLa,SH-SY5Y,Mouse thymus,Rat thymus
细胞定位	Nucleus
纯化	Affinity purification

抗原信息

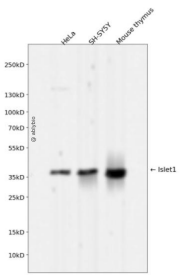
抗原信息	Recombinant fusion protein corresponding to Human Islet1.
序列	YAANPRPDALMKEQLVEMTGLSPRVIRVWFQNKRCCKDKKRSIMMKQLQQQPNDKTNIQGMTGTPMVAASPERHDGG LQANPVEVQSYQPPWKVLSDFALQ

靶点信息

研究背景	This gene encodes a member of the LIM/homeodomain family of transcription factors. The encoded protein binds to the enhancer region of the insulin gene, among others, and may play an important role in regulating insulin gene expression. The encoded protein is central to the development of pancreatic cell lineages and may also be required for motor neuron generation. Mutations in this gene have been associated with maturity-onset diabetes of the young.
------	---

基因ID	3670
基因名	ISL1
Swiss	P61371
别名	ISL1;ISLET1;Isl-1

产品验证



Western blot analysis of Islet1 expressed in HeLa,SH-SY5Y,Mouse thymus using Islet1 Rabbit mAb at 1:1 000. Secondary antibody: HRP Goat Anti-Rabbit IgG (H+L) at 1:5000. Lysates/proteins: 30ug per lane. Bl ocking buffer: 5% non-fat dry milk in TBST. Detection: ECL Enhanced Kit. Exposure time: 120s.

实验步骤

访问官网浏览详情: www.ablybio.cn