

GCET2 Rabbit mAb

货号: **AYM31431**

产品信息

反应	Human
宿主	Rabbit
克隆性	Monoclonal
预测反应	
应用	IHC IF/ICC FC
推荐浓度	IHC: 1:50 - 1:200 IF/ICC: 1:50 - 1:200 FC: 1:20 - 1:50
理论分子量	
实测分子量	21KDa
形式	Liquid
保存条件	Store at -20°C. Avoid freeze / thaw cycles. Buffer: PBS with 0.75% BSA,50% glycerol,pH7.3.
偶联物	Unconjugated
阳性对照	Raji,Mouse spleen,Rat spleen
细胞定位	cytoplasm,plasma membrane
纯化	Affinity purification

抗原信息

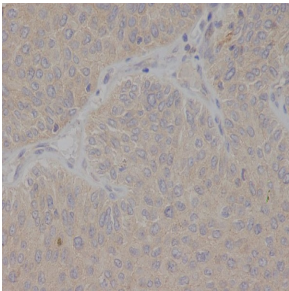
抗原信息	Recombinant fusion protein corresponding to Human GCET2.
序列	MGNSLLRENRQNTQEMPWNVRMQSPKQRTSRCWDHHAEGCFCLPWKKILIFEKRQDSQNERMSSTPIQDNVD QTYSEELCYTLINHRVLCTRPSGNSAAEYYENVPCKAERPRESLGGTETEYSLHMPSTDPRHARSPEDYEYELLMPHRISSHF LQQRPLMAPSETQFSLH

靶点信息

研究背景	This gene encodes a protein which may function in signal transduction pathways and whose expression is elevated in germinal cell lymphomas. It contains a putative PDZ-interacting domain, an immunoreceptor tyrosine-based activation motif (ITAM), and two putative SH2 binding sites. In B cells, its expression is specifically induced by interleukin-4. Alternative splicing results in multiple transcript variants encoding different isoforms. [provided by RefSeq, Jul 2008]
------	--

基因ID	257144
基因名	GCSAM
Swiss	Q8N6F7
别名	GCAT2; GCET2; HGAL

产品验证



Immunohistochemical analysis of paraffin-embedded human bladder cancer, using GCET2 Anti body.

实验步骤

访问官网浏览详情: www.ablybio.cn