

Plastin L Rabbit mAb

货号: **AYM31418**

产品信息

反应	Human
宿主	Rabbit
克隆性	Monoclonal
预测反应	
应用	WB IHC IF/ICC IP FC
推荐浓度	WB: 1:500 - 1:2000 IHC: 1:50 - 1:200 IF/ICC: 1:50 - 1:200 IP: 1:20 - 1:50 FC: 1:20 - 1:50
理论分子量	21kDa/70kDa
实测分子量	70kDa
形式	Liquid
保存条件	Store at -20°C. Avoid freeze / thaw cycles. Buffer: PBS with 0.75% BSA,50% glycerol,pH7.3.
偶联物	Unconjugated
阳性对照	Raji,K-562,DU145,Jurkat,Mouse thymus,Mouse spleen
细胞定位	Cell junction,Cell projection,Cytoplasm,Cytoplasmic side,Peripheral membrane protein,cytoskeleton,ruffle membrane
纯化	Affinity purification

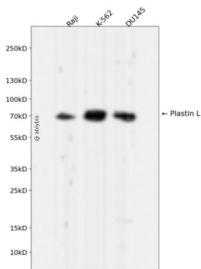
抗原信息

抗原信息	Recombinant fusion protein corresponding to Human Plastin L.
序列	MARGSVSDEEMMELREAFKVDTDGNGYISFNELNDLFKAAACLPLPGYRVREITENLMATGDLDQDGRISFDEFIKIFHGL KSTDVAKTRKAINKKEGICAIGGTSEQSSVGTQHSYSEEEKYAFVNWINKALENDPDCRHVIPMNPNTNDFNAVGDGIV LCKMINLSVPDTIDERTINKKLTPTIQTENLNLALNSASAIGCHVNVNIGAEDLKEGKPYLVLLGWQVIKIGLFADIELSRNEA LIALLREGESLEDLMKLSPEELL

靶点信息

研究背景	Plastins are a family of actin-binding proteins that are conserved throughout eukaryote evolution and expressed in most tissues of higher eukaryotes. In humans, two ubiquitous plastin isoforms (L and T) have been identified. Plastin 1 (otherwise known as Fimbrin) is a third distinct plastin isoform which is specifically expressed at high levels in the small intestine. The L isoform is expressed only in hemopoietic cell lineages, while the T isoform has been found in all other normal cells of solid tissues that have replicative potential (fibroblasts, endothelial cells, epithelial cells, melanocytes, etc.). However, L-plastin has been found in many types of malignant human cells of non-hemopoietic origin suggesting that its expression is induced accompanying tumorigenesis in solid tissues.
基因ID	3936
基因名	LCP1
Swiss	P13796
别名	LCP1;CP64;HEL-S-37;L-PLASTIN;LC64P;LPL;PLS2;plastin-2

产品验证



Western blot analysis of Plastin L expressed in Raji, K-562, DU145 using Plastin L Rabbit mAb at 1:1000. Secondary antibody: HRP Goat Anti-Rabbit IgG (H+L) at 1:5000. Lysates/proteins: 30ug per lane. Blocking buffer: 5% non-fat dry milk in TBST. Detection: ECL Enhanced Kit. Exposure time: 120s.

实验步骤

访问官网浏览详情: www.ablybio.cn