

PKC epsilon Rabbit mAb

货号: **AYM31406**

产品信息

反应	Human,Mouse,Rat
宿主	Rabbit
克隆性	Monoclonal
预测反应	
应用	WB IHC IF/ICC FC
推荐浓度	WB: 1:500 - 1:2000 IHC: 1:50 - 1:200 IF/ICC: 1:50 - 1:200 FC: 1:20 - 1:50
理论分子量	83kDa
实测分子量	84kDa
形式	Liquid
保存条件	Store at -20°C. Avoid freeze / thaw cycles. Buffer: PBS with 0.75% BSA,50% glycerol,pH7.3.
偶联物	Unconjugated
阳性对照	Mouse brain,Mouse lung
细胞定位	Cell membrane,Cytoplasm,Nucleus,cytoskeleton,perinuclear region
纯化	Affinity purification

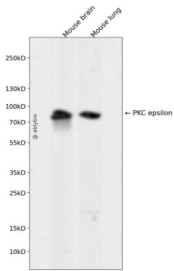
抗原信息

抗原信息	Recombinant fusion protein corresponding to Human PKC epsilon.
序列	YVNGGDLMFQIQRSRKFDEPRSRFYAAEVTSALMFLHQHGVIYRDLKLDNILLDAEGHCKLADFGMCKEGILNGVTTTTFC GTPDYIAPEILQELEYGPSVDWWALGVLMYEMMAGQPPFEADNEDDLFESILHDDVLYPVWLSKEAVSILKAFMTKNPHK RLGCVASQNGEDAIAKQHPFFKEIDWVLEQKKIKPPFKPRIKTRDVNNFDQDFTRREPVLTLVDEAIVKQINQEEFKGFSY FGEDLMP

靶点信息

研究背景	Protein kinase C (PKC) is a family of serine- and threonine-specific protein kinases that can be activated by calcium and the second messenger diacylglycerol. PKC family members phosphorylate a wide variety of protein targets and are known to be involved in diverse cellular signaling pathways. PKC family members also serve as major receptors for phorbol esters, a class of tumor promoters. Each member of the PKC family has a specific expression profile and is believed to play a distinct role in cells. The protein encoded by this gene is one of the PKC family members. This kinase has been shown to be involved in many different cellular functions, such as neuron channel activation, apoptosis, cardioprotection from ischemia, heat shock response, as well as insulin exocytosis. Knockout studies in mice suggest that this kinase is important for lipopolysaccharide (LPS)-mediated signaling in activated macrophages and may also play a role in controlling anxiety-like behavior.
基因ID	5581
基因名	PRKCE
Swiss	Q02156
别名	PRKCE;PKCE;nPKC-epsilon

产品验证



Western blot analysis of PKC epsilon expressed in Mouse brain, Mouse lung using PKC epsilon Rabbit mAb at 1:1000. Secondary antibody: HRP Goat Anti-Rabbit IgG (H+L) at 1:5000. Lysates/proteins: 30ug per lane. Blocking buffer: 5% non-fat dry milk in TBST. Detection: ECL Enhanced Kit. Exposure time: 120s.

实验步骤

访问官网浏览详情: www.ablybio.cn