

— ABLYBIO, Help Your Research



PARP Rabbit mAb

货号: **AYM31401**

产品信息

反应	Human,Mouse,Rat
宿主	Rabbit
克隆性	Monoclonal
预测反应	
应用	WB IHC IF/ICC
推荐浓度	WB: 1:500 - 1:2000 IHC: 1:50 - 1:200 IF/ICC: 1:50 - 1:200
理论分子量	113kDa
实测分子量	113,89kDa
形式	Liquid
保存条件	Store at -20°C. Avoid freeze / thaw cycles. Buffer: PBS with 0.75% BSA,50% glycerol,pH7.3.
偶联物	Unconjugated
阳性对照	HeLa
细胞定位	Nucleus,nucleolus
纯化	Affinity purification

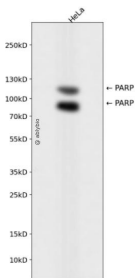
抗原信息

抗原信息	Recombinant fusion protein corresponding to Human PARP.
------	---

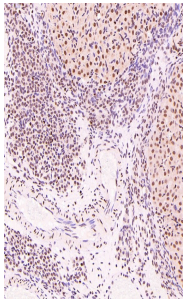
靶点信息

研究背景	This gene encodes a chromatin-associated enzyme, poly(ADP-ribosyl)transferase, which modifies various nuclear proteins by poly(ADP-ribosyl)ation. The modification is dependent on DNA and is involved in the regulation of various important cellular processes such as differentiation, proliferation, and tumor transformation and also in the regulation of the molecular events involved in the recovery of cell from DNA damage. In addition, this enzyme may be the site of mutation in Fanconi anemia, and may participate in the pathophysiology of type I diabetes.
基因ID	142
基因名	PARP1
Swiss	P09874
别名	PARP,PARP Rabbit mAb,PARP1,ADP-ribosyltransferase diphtheria toxin-like 1,DNA ADP-ribosyltransferase P ARP1,NAD(+) ADP-ribosyltransferase 1,Poly[ADP-ribose] synthase 1,Protein poly-ADP-ribosyltransferase P ARP1,Poly [ADP-ribose] polymerase 1,89-kDa form

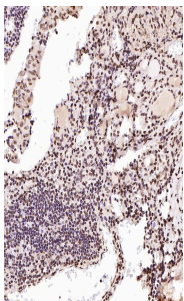
产品验证



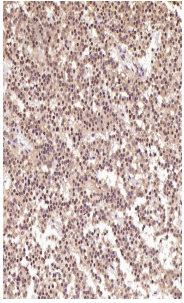
Western blot analysis of PARP expressed in HeLa using PARP Rabbit mAb at 1:1000. Secondary antibody: HRP Goat Anti-Rabbit IgG (H+L) at 1:5000. Lysates/proteins: 30ug per lane. Blocking buffer: 5% non-fat dry milk in TBST. Detection: ECL Enhanced Kit. Exposure time: 120s.



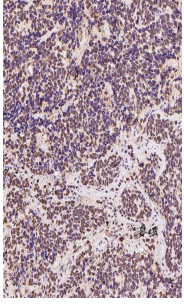
Immunohistochemical analysis of paraffin-embedded Rat ovary, using the Antibody at 1:300 dilution.



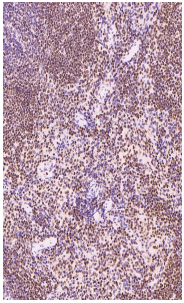
Immunohistochemical analysis of paraffin-embedded Human thyroid cancer, using the Antibody at 1:150 dilution.



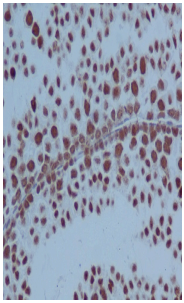
Immunohistochemical analysis of paraffin-embedded Human pituitary tumor, using the Antibody at 1:500 dilution.



Immunohistochemical analysis of paraffin-embedded Human small cell lung cancer , using the Antibody at 1:500 dilution.



Immunohistochemical analysis of paraffin-embedded Mouse spleen, using the Antibody at 1:300 dilution.



Immunohistochemical analysis of paraffin-embedded mouse testis, using PARP Antibody.

实验步骤

访问官网浏览详情: www.ablybio.cn (<https://www.ablybio.cn/www.ablybio.cn>)