

# PIM1 Rabbit mAb

货号: **AYM31399**

## 产品信息

反应	Human,Mouse
宿主	Rabbit
克隆性	Monoclonal
预测反应	
应用	WB IHC IF/ICC
推荐浓度	<b>WB:</b> 1:500 - 1:2000 <b>IHC:</b> 1:50 - 1:200 <b>IF/ICC:</b> 1:50 - 1:200
理论分子量	35kDa/45kDa
实测分子量	32kDa
形式	Liquid
保存条件	Store at -20°C. Avoid freeze / thaw cycles. Buffer: PBS with 0.75% BSA,50% glycerol,pH7.3.
偶联物	Unconjugated
阳性对照	H460,Mouse kidney,Rat kidney
细胞定位	Cell membrane,Cytoplasm,Nucleus
纯化	Affinity purification

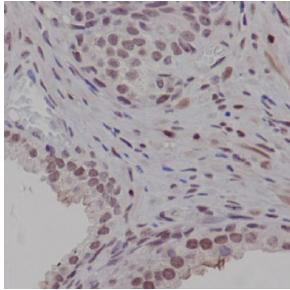
## 抗原信息

抗原信息	Recombinant fusion protein corresponding to Human PIM1 .
序列	MPHEPHEPLTPPFSA LPD PAGAPSR RQRQPQLSSDSPSAFRASRSHSRNATRSHSHSHSPRHSLRHSPGSGSCGSSS GHRPCADILEVGM LLSKINSLAHLRAAPCNDLHATK LAPGKEKEPLESQYQVGPLLGSGGFGSVYSGIRVSDNLPVAIKHVE KDRISDWGELPNGTRVPM EVVLLKKVSSG

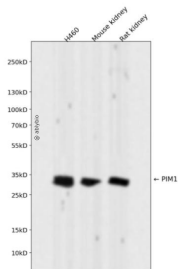
## 靶点信息

研究背景	The protein encoded by this gene belongs to the Ser/Thr protein kinase family, and PIM subfamily. This gene is expressed primarily in B-lymphoid and myeloid cell lines, and is overexpressed in hematopoietic malignancies and in prostate cancer. It plays a role in signal transduction in blood cells, contributing to both cell proliferation and survival, and thus provides a selective advantage in tumorigenesis. Both the human and orthologous mouse genes have been reported to encode two isoforms (with preferential cellular localization) resulting from the use of alternative in-frame translation initiation codons, the upstream non-AUG (CUG) and downstream AUG codons (PMIDs:16186805, 1825810).
基因ID	5292
基因名	PIM1
Swiss	P11309
别名	PIM;PIM1;PIM1

## 产品验证



Immunohistochemical analysis of paraffin-embedded human prostate carcinoma, using PIM1 Antibody .



Western blot analysis of PIM1 expressed in H460, Mouse kidney, Rat kidney using PIM1 Rabbit m Ab at 1:1000. Secondary antibody: HRP Goat Anti-Rabbit IgG (H+L) at 1:5000. Lysates/proteins : 30ug per lane. Blocking buffer: 5% non-fat dry milk in TBST. Detection: ECL Enhanced Kit. Exposure time: 120s.

## 实验步骤

访问官网浏览详情: [www.ablybio.cn](http://www.ablybio.cn)