

Pyrophosphatase 1 Rabbit mAb

货号: **AYM31397**

产品信息

反应	Human,Mouse,Rat
宿主	Rabbit
克隆性	Monoclonal
预测反应	
应用	WB IP
推荐浓度	WB: 1:500 - 1:2000 IP: 1:20 - 1:50
理论分子量	32kDa
实测分子量	33kDa
形式	Liquid
保存条件	Store at -20°C. Avoid freeze / thaw cycles. Buffer: PBS with 0.75% BSA,50% glycerol,pH7.3.
偶联物	Unconjugated
阳性对照	HeLa,HepG2,HT-29,Mouse liver,Mouse intestine
细胞定位	Cytoplasm
纯化	Affinity purification

抗原信息

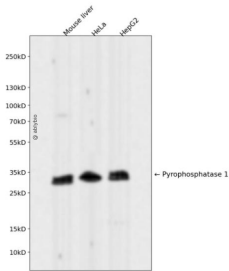
抗原信息	Recombinant fusion protein corresponding to Human Pyrophosphatase 1.
序列	MSGFSTEERAAPFSLEYRVFLKNEKGQYISPFHDIPIYADKDVFMVVEVPRWSNAKMEIATKDP LNPIKQDVKKGKLRYYA NLFYKGYIWNYGAIPQTWEDPGHNDKHTGCCGDNDPIDVCEIGSKVCARGEIIGVKVLGILAMIDEGETDWKVIINVDD PDAANYNDINDVKRLKPGYLEATVDWFRYKVPDGGKPENEFAFNAEFKDKDFAIIDIIKSTHDHWKALVTKKTNGKGISCM NTTLESFPKCDPDAARAIVDALPPPCESACTVPTDVKWFHHQKN

靶点信息

研究背景	The protein encoded by this gene is a member of the inorganic pyrophosphatase (PPase) family. PPases catalyze the hydrolysis of pyrophosphate to inorganic phosphate, which is important for the phosphate metabolism of cells. Studies of a similar protein in bovine suggested a cytoplasmic localization of this enzyme.
------	---

基因ID	5464
基因名	PPA1
Swiss	Q15181
别名	PPA1;HEL-S-66p;IOPPP;PP;PP1;SID6-8061

产品验证



Western blot analysis of Pyrophosphatase 1 expressed in Mouse liver, HeLa, HepG2 using Pyrophosphatase 1 Rabbit mAb at 1:1000. Secondary antibody: HRP Goat Anti-Rabbit IgG (H+L) at 1:5000. Lysates/proteins: 30ug per lane. Blocking buffer: 5% non-fat dry milk in TBST. Detection: ECL Enhanced Kit. Exposure time: 120s.

实验步骤

访问官网浏览详情: www.ablybio.cn