

# CELF1 Rabbit mAb

货号: **AYM31388**

## 产品信息

反应	Human,Mouse,Rat
宿主	Rabbit
克隆性	Monoclonal
预测反应	
应用	WB IHC IF/ICC IP FC
推荐浓度	<b>WB:</b> 1:500 - 1:2000 <b>IHC:</b> 1:50 - 1:200 <b>IF/ICC:</b> 1:50 - 1:200 <b>IP:</b> 1:20 - 1:50 <b>FC:</b> 1:20 - 1:50
理论分子量	50kDa/51kDa/52kDa/55kDa
实测分子量	52kDa
形式	Liquid
保存条件	Store at -20°C. Avoid freeze / thaw cycles. Buffer: PBS with 0.75% BSA,50% glycerol,pH7.3.
偶联物	Unconjugated
阳性对照	U-87MG,SH-SY5Y,HepG2,NIH/3T3,HeLa,Mouse liver,Mouse testis
细胞定位	Cytoplasm,Nucleus
纯化	Affinity purification

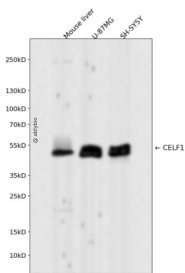
## 抗原信息

抗原信息	Recombinant fusion protein corresponding to Human CELF1.
序列	RKLFIGMISKKCTENDIRVMFSSFGQIEECRILRGPDGLSRGCAVFTTTRAMAQTAIKAMHQAQTMEGCSSPMVVKFADT QKDKEQKRMAQQLQQMQQISAASVWGNLAGLNTLGPQYLALLQQTASSGNLNTLSSLHPMGGGLNAMQLQNLAAALAA AASAAQNTPSGTNALTTSSSPLSVLTSSAGSSPSSSSNSVNPISLALGALQTLGATAGLNVGSLAGMAALNGGLGSSGL SNGTGSTMEALTQAYSGIQYAAAAALPTLYNQNLTTQSSIGAAGSQKEGPEGANLFYHLPQEFQDQDLLQMFMPFGNV VSAKVFIDKQTNLSKCFGFVSYDNPVSAQAAIQSMNGFQIGMKRLKLVQLKRSKNDKPY

## 靶点信息

研究背景	Members of the CELF/BRUNOL protein family contain two N-terminal RNA recognition motif (RRM) domains, one C-terminal RRM domain, and a divergent segment of 160-230 aa between the second and third RRM domains. Members of this protein family regulate pre-mRNA alternative splicing and may also be involved in mRNA editing, and translation. This gene may play a role in myotonic dystrophy type 1 (DM1) via interactions with the dystrophin myotonic-protein kinase (DMPK) gene. Alternative splicing results in multiple transcript variants encoding different isoforms.
基因ID	10658
基因名	CELF1
Swiss	Q92879
别名	CELF1;BRUNOL2;CUG-BP;CUGBP;CUGBP1;EDEN-BP;NAB50;NAPOR;hNab50

## 产品验证



Western blot analysis of CELF1 expressed in Mouse liver,U-87MG,SH-SY5Y using CELF1 Rabbit mAb at 1:1000. Secondary antibody: HRP Goat Anti-Rabbit IgG (H+L) at 1:5000. Lysates/proteins: 30ug per lane. Blocking buffer: 5% non-fat dry milk in TBST. Detection: ECL Enhanced Kit. Exposure time: 120s.

## 实验步骤

访问官网浏览详情: [www.ablybio.cn](http://www.ablybio.cn)