

SLC12A1 / NKCC2 Rabbit mAb

货号: **AYM31387**

产品信息

反应	Human
宿主	Rabbit
克隆性	Monoclonal
预测反应	
应用	WB
推荐浓度	WB: 1:500 - 1:2000
理论分子量	121kDa
实测分子量	150kDa
形式	Liquid
保存条件	Store at -20°C. Avoid freeze / thaw cycles. Buffer: PBS with 0.75% BSA,50% glycerol,pH7.3.
偶联物	Unconjugated
阳性对照	293T,Mouse kidney,Rat kidney
细胞定位	Membrane,Multi-pass membrane protein
纯化	Affinity purification

抗原信息

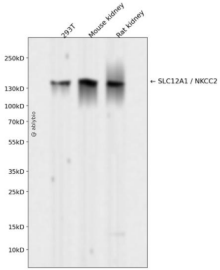
抗原信息	Recombinant fusion protein corresponding to Human SLC12A1 / NKCC2.
序列	YGIYNMWWVSLFGAVLCCAVMFVINWAAVITYVIEFFLYVYVTCKKPDVNWGSSTQALSYSALDNALELTTVEDHVKNFR PQCIVLTGGPMTRPALLDITHAFTKNSGLCCCEVFVGPRLCVKEMNSGMAKKQAWLIKNIKAFYAAVAADCFRDGVRS LLQASGLGRMKPNTLVIGYKKNWRKAPLTEIENYVGII

靶点信息

研究背景	This gene encodes a kidney-specific sodium-potassium-chloride cotransporter that is expressed on the luminal membrane of renal epithelial cells of the thick ascending limb of Henle's loop and the macula densa. It plays a key role in concentrating urine and accounts for most of the NaCl resorption. It is sensitive to such diuretics as furosemide and bumetanide. Some Bartter-like syndromes result from defects in this gene. Alternative splicing results in multiple transcript variants encoding distinct isoforms. Additional splice variants have been described but their biological validity in humans has not been experimentally proven.
------	--

基因ID	6557
基因名	SLC12A1
Swiss	Q13621
别名	SLC12A1;BSC1;NKCC2

产品验证



Western blot analysis of SLC12A1 / NKCC2 expressed in 293T, Mouse kidney, Rat kidney using SLC12A1 / NKCC2 Rabbit mAb at 1:1000. Secondary antibody: HRP Goat Anti-Rabbit IgG (H+L) at 1:5000. Lysates/proteins: 30ug per lane. Blocking buffer: 5% non-fat dry milk in TBST. Detection: ECL Enhanced Kit. Exposure time: 120s.

实验步骤

访问官网浏览详情: www.ablybio.cn