

# GEF H1 Rabbit mAb

货号: **AYM31385**

## 产品信息

反应	Human,Mouse,Rat
宿主	Rabbit
克隆性	Monoclonal
预测反应	
应用	WB IF/ICC FC
推荐浓度	<b>WB:</b> 1:500 - 1:2000 <b>IF/ICC:</b> 1:50 - 1:200 <b>FC:</b> 1:20 - 1:50
理论分子量	108kDa/111kDa
实测分子量	112kDa
形式	Liquid
保存条件	Store at -20°C. Avoid freeze / thaw cycles. Buffer: PBS with 0.75% BSA,50% glycerol,pH7.3.
偶联物	Unconjugated
阳性对照	C6
细胞定位	Cell junction,Cell projection,Cytoplasm,Cytoplasmic vesicle,Golgi apparatus,cytoskeleton,ruffle membrane,spindle,tight junction
纯化	Affinity purification

## 抗原信息

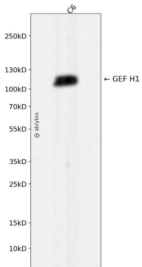
抗原信息	Recombinant fusion protein corresponding to Human GEF H1.
序列	RRSLP

## 靶点信息

研究背景	Rho GTPases play a fundamental role in numerous cellular processes that are initiated by extracellular stimuli that work through G protein coupled receptors. The encoded protein may form complex with G proteins and stimulate rho-dependent signals. Alternatively spliced transcript variants encoding different isoforms have been identified.[provided by RefSeq, Jun 2009]
基因ID	9181

基因名	ARHGEF2
Swiss	Q92974
别名	GEF;GEF-H1;GEFH1;LFP40;P40;ARHGEF2;NEDMHM

## 产品验证



Western blot analysis of GEF H1 expressed in C6 using GEF H1 Rabbit mAb at 1:1000. Secondary antibody : HRP Goat Anti-Rabbit IgG (H+L) at 1:5000. Lysates/proteins: 30ug per lane. Blocking buffer: 5% non-fat dry milk in TBST. Detection: ECL Enhanced Kit. Exposure time: 120s.

## 实验步骤

访问官网浏览详情: [www.ablybio.cn](http://www.ablybio.cn)