

Renalase Rabbit mAb

货号: **AYM31384**

产品信息

反应	Human,Mouse,Rat
宿主	Rabbit
克隆性	Monoclonal
预测反应	
应用	WB IHC
推荐浓度	WB: 1:500 - 1:2000 IHC: 1:50 - 1:200
理论分子量	42kDa
实测分子量	42kDa
形式	Liquid
保存条件	Store at -20°C. Avoid freeze / thaw cycles. Buffer: PBS with 0.75% BSA,50% glycerol,pH7.3.
偶联物	Unconjugated
阳性对照	Mouse liver,Mouse testis,Mouse kidney,Rat liver,Rat testis,Rat kidney
细胞定位	extracellular region,extracellular space
纯化	Affinity purification

抗原信息

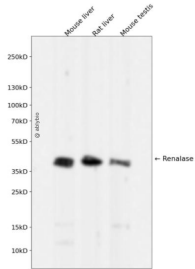
抗原信息	Recombinant fusion protein corresponding to Human Renalase.
序列	MAQVLIVGAGMTGSLCAALLRRQTSGPLYLAVWDKAEDSGGRMTTACSPHNPQCTADLGAQYITCTPHYAKKHQRFYDE LLAYGVLRPLSSPIEGMVMKE

靶点信息

研究背景	Renalase is a flavin adenine dinucleotide-dependent amine oxidase that is secreted into the blood from the kidney (Xu et al., 2005 [PubMed 15841207]).[supplied by OMIM, Mar 2008]
基因ID	55328
基因名	RNLS

Swiss	Q5VYX0
别名	C10orf59; RENALASE

产品验证



Western blot analysis of Renalase expressed in Mouse liver,Rat liver,Mouse testis using Renalase Rabbit mAb at 1:1000. Secondary antibody: HRP Goat Anti-Rabbit IgG (H+L) at 1:5000. Lysates/proteins: 30 ug per lane. Blocking buffer: 5% non-fat dry milk in TBST. Detection: ECL Enhanced Kit. Exposure time: 120s.

实验步骤

访问官网浏览详情: www.ablybio.cn