

RASSF2 Rabbit mAb

货号: **AYM31382**

产品信息

反应	Human
宿主	Rabbit
克隆性	Monoclonal
预测反应	
应用	WB
推荐浓度	WB: 1:500 - 1:2000
理论分子量	17kDa/37kDa
实测分子量	37kDa
形式	Liquid
保存条件	Store at -20°C. Avoid freeze / thaw cycles. Buffer: PBS with 0.75% BSA,50% glycerol,pH7.3.
偶联物	Unconjugated
阳性对照	HL-60,U-937,A-549,Mouse spleen,Mouse thymus,Rat thymus
细胞定位	Cytoplasm,Nucleus
纯化	Affinity purification

抗原信息

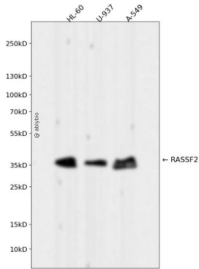
抗原信息	Recombinant fusion protein corresponding to Human RASSF2.
序列	HTSGEKQKCLKATDYPLIARILQGPCEQISKVFLMEKDQVEEVTYDVAQYIKFEMPVLKSFQKLQEEEDREVKKLMRKYTVLRLMIRQRLEEIAETPATI

靶点信息

研究背景	This gene encodes a protein that contains a Ras association domain. Similar to its cattle and sheep counterparts, this gene is located near the prion gene. Two alternatively spliced transcripts encoding the same isoform have been reported.
基因ID	9770
基因名	RASSF2

Swiss	P50749
别名	RASSF2;CENP-34;RASFADIN

产品验证



Western blot analysis of RASSF2 expressed in HL-60,U-937,A-549 using RASSF2 Rabbit mAb at 1:1000 . Secondary antibody: HRP Goat Anti-Rabbit IgG (H+L) at 1:5000. Lysates/proteins: 30ug per lane. Blo cking buffer: 5% non-fat dry milk in TBST. Detection: ECL Enhanced Kit. Exposure time: 120s.

实验步骤

访问官网浏览详情: www.ablybio.cn