

ATG9A Rabbit mAb

货号: **AYM31379**

产品信息

| | |
|-------|---|
| 反应 | Human,Mouse,Rat |
| 宿主 | Rabbit |
| 克隆性 | Monoclonal |
| 预测反应 | |
| 应用 | WB IHC ICC IP |
| 推荐浓度 | WB: 1:500 - 1:2000 IHC: 1:50 - 1:200 ICC: 1:50 - 1:200 IP: 1:20 - 1:50 |
| 理论分子量 | 60kDa/87kDa/94kDa |
| 实测分子量 | 94kDa |
| 形式 | Liquid |
| 保存条件 | Store at -20°C. Avoid freeze / thaw cycles. Buffer: PBS with 0.75% BSA,50% glycerol,pH7.3. |
| 偶联物 | Unconjugated |
| 阳性对照 | Mouse liver |
| 细胞定位 | Cytoplasmic vesicle,Endoplasmic reticulum membrane,Golgi apparatus,Late endosome membrane,Multi-pass membrane protein,autophagosome membrane,trans-Golgi network membrane |
| 纯化 | Affinity purification |

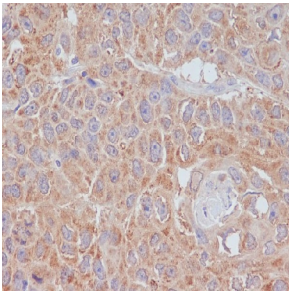
抗原信息

| | |
|------|---|
| 抗原信息 | Recombinant fusion protein corresponding to Human ATG9A. |
| 序列 | WQEVQARIVQTQKEHQICIHKRELTELDIYHRILRFQNYMVALVNKSLPLRFRLPGLGEAVFFTRGLKYNFELILFWGPGSL FLNEWSLKAEYKRGGRLELAQRLSNRI |

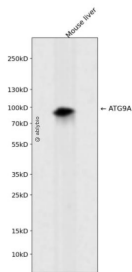
靶点信息

| | |
|-------|--|
| 研究背景 | Phospholipid scramblase involved in autophagy by mediating autophagosomal membrane expansion. Cycles between the preautophagosomal structure/phagophore assembly site (PAS) and the cytoplasmic vesicle pool and supplies membrane for the growing autophagosome. Lipid scramblase activity plays a key role in preautophagosomal structure/phagophore assembly by distributing the phospholipids that arrive through ATG2 (ATG2A or ATG2B from the cytoplasmic to the luminal leaflet of the bilayer, thereby driving autophagosomal membrane expansion. Also required to supply phosphatidylinositol 4-phosphate to the autophagosome initiation site by recruiting the phosphatidylinositol 4-kinase beta (PI4KB) in a process dependent on ARFIP2, but not ARFIP1. In addition to autophagy, also plays a role in necrotic cell death (By similarity). |
| 基因ID | 79065 |
| 基因名 | ATG9A |
| Swiss | Q7Z3C6 |
| 别名 | ATG9A;APG9L1;MGD3208;mATG9 |

产品验证



Immunohistochemical analysis of paraffin-embedded human lung cancer, using ATG9A Antibody.



Western blot analysis of ATG9A expressed in Mouse liver using ATG9A Rabbit mAb at 1:1000. Secondary antibody: HRP Goat Anti-Rabbit IgG (H+L) at 1:5000. Lysates/proteins: 30ug per lane. Blocking buffer: 5% non-fat dry milk in TBST. Detection: ECL Enhanced Kit. Exposure time: 120s.

实验步骤

访问官网浏览详情: www.ablybio.cn