

RPS3 Rabbit mAb

货号: **AYM31366**

产品信息

反应	Human,Mouse,Rat
宿主	Rabbit
克隆性	Monoclonal
预测反应	
应用	WB IHC ICC
推荐浓度	WB: 1:500 - 1:2000 IHC: 1:50 - 1:200 ICC: 1:50 - 1:200
理论分子量	26kDa/28kDa
实测分子量	27kDa
形式	Liquid
保存条件	Store at -20°C. Avoid freeze / thaw cycles. Buffer: PBS with 0.75% BSA,50% glycerol,pH7.3.
偶联物	Unconjugated
阳性对照	HepG2,U-251MG,Mouse liver,Mouse brain,Rat liver
细胞定位	Cytoplasm,Mitochondrion inner membrane,Nucleus,Peripheral membrane protein,cytoskeleton,nucleolus, spindle
纯化	Affinity purification

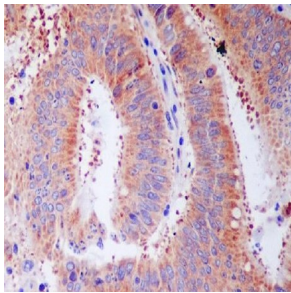
抗原信息

抗原信息	Recombinant fusion protein corresponding to Human RPS3.
序列	MAVQISKKRKFVADGIFKAELNEFLTRELAEDGYSGVEVRVTPTRTEIIILATRTRQNVLGEKGRRIRELTAVVQKRFGFPEGSV ELYAEKVATRGLCAIAQAESLRYKLLGGLAVRRACYGVLRFIMESGAKGCEVVVSGKLRGQRAKSMKFVDGLMIHSGDPV NYYVDTAVRHVLLRQGVLGIVKIMLPWDPTGKIGPKKPLPDHVSIVEPKDEILPTTPISEQGGKPEPPAMPQPVPTA

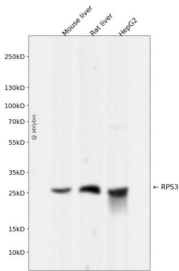
靶点信息

研究背景	Ribosomes, the organelles that catalyze protein synthesis, consist of a small 40S subunit and a large 60S subunit. Together these subunits are composed of 4 RNA species and approximately 80 structurally distinct proteins. This gene encodes a ribosomal protein that is a component of the 40S subunit, where it forms part of the domain where translation is initiated. The protein belongs to the S3P family of ribosomal proteins. Studies of the mouse and rat proteins have demonstrated that the protein has an extraribosomal role as an endonuclease involved in the repair of UV-induced DNA damage. The protein appears to be located in both the cytoplasm and nucleus but not in the nucleolus. Higher levels of expression of this gene in colon adenocarcinomas and adenomatous polyps compared to adjacent normal colonic mucosa have been observed. This gene is co-transcribed with the small nucleolar RNA genes U15A and U15B, which are located in its first and fifth introns, respectively. As is typical for genes encoding ribosomal proteins, there are multiple processed pseudogenes of this gene dispersed through the genome. Multiple alternatively spliced transcript variants encoding different isoforms have been found for this gene.
基因ID	6188
基因名	RPS3
Swiss	P23396
别名	RPS3;S3

产品验证



Immunohistochemical analysis of paraffin-embedded human colon cancer, using RPS3 Antibody



Western blot analysis of RPS3 expressed in Mouse liver, Rat liver, HepG2 using RPS3 Rabbit mAb at 1:1000. Secondary antibody: HRP Goat Anti-Rabbit IgG (H+L) at 1:5000. Lysates/proteins: 30 ug per lane. Blocking buffer: 5% non-fat dry milk in TBST. Detection: ECL Enhanced Kit. Exposure time: 120s.

实验步骤

访问官网浏览详情: www.ablybio.cn