

AP1G1 Rabbit mAb

货号: **AYM31365**

产品信息

反应	Human,Mouse,Rat
宿主	Rabbit
克隆性	Monoclonal
预测反应	
应用	WB IHC
推荐浓度	WB: 1:500 - 1:2000 IHC: 1:50 - 1:200
理论分子量	100kDa
实测分子量	100kDa
形式	Liquid
保存条件	Store at -20°C. Avoid freeze / thaw cycles. Buffer: PBS with 0.75% BSA,50% glycerol,pH7.3.
偶联物	Unconjugated
阳性对照	HeLa,293T,HepG2,Mouse liver,Mouse brain,Rat liver,Rat brain
细胞定位	clathrin-coated pit,clathrin-coated vesicle,cytoplasm,cytosol,early endosome,Golgi apparatus,perinuclear region of cytoplasm,recycling endosome
纯化	Affinity purification

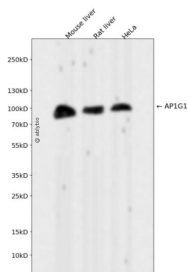
抗原信息

抗原信息	Recombinant fusion protein corresponding to Human AP1G1.
序列	RSNTNPSVTVITIQASNSTELDMTDFVFAQAAVPKTFQLQLLSPSSSIVPAFNTGTITQVIKVLNPQKQQLRMRIKLTYNHKGS AMQDLAEVNNFPPQSWQ

靶点信息

研究背景	Adaptins are important components of clathrin-coated vesicles transporting ligand-receptor complexes from the plasma membrane or from the trans-Golgi network to lysosomes. The adaptin family of proteins is composed of four classes of molecules named alpha, beta-, beta prime- and gamma- adaptins. Adaptins, together with medium and small subunits, form a heterotetrameric complex called an adaptor, whose role is to promote the formation of clathrin-coated pits and vesicles. The protein encoded by this gene is a gamma-adaptin protein and it belongs to the adaptor complexes large subunits family. Two transcript variants encoding different isoforms have been found for this gene.
基因ID	164
基因名	AP1G1
Swiss	O43747
别名	

产品验证



Western blot analysis of AP1G1 expressed in Mouse liver, Rat liver, HeLa using AP1G1 Rabbit mAb at 1:1000. Secondary antibody: HRP Goat Anti-Rabbit IgG (H+L) at 1:5000. Lysates/proteins: 30ug per lane. Blocking buffer: 5% non-fat dry milk in TBST. Detection: ECL Enhanced Kit. Exposure time: 120s.

实验步骤

访问官网浏览详情: www.ablybio.cn