

SF2/ASF Rabbit mAb

货号: **AYM31364**

产品信息

反应	Human,Mouse,Rat
宿主	Rabbit
克隆性	Monoclonal
预测反应	
应用	WB IHC IF/ICC FC
推荐浓度	WB: 1:500 - 1:2000 IHC: 1:50 - 1:200 IF/ICC: 1:50 - 1:200 FC: 1:20 - 1:50
理论分子量	33kDa
实测分子量	33kDa
形式	Liquid
保存条件	Store at -20°C. Avoid freeze / thaw cycles. Buffer: PBS with 0.75% BSA,50% glycerol,pH7.3.
偶联物	Unconjugated
阳性对照	HeLa,MCF7,Mouse brain,Rat brain
细胞定位	Cytoplasm,Nucleus speckle
纯化	Affinity purification

抗原信息

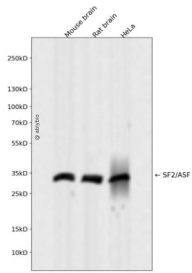
抗原信息	Recombinant fusion protein corresponding to Human SF2/ASF.
序列	GGGGGGGAPRGRYGPSSRRSENRRVVVSGLPSPGSWQDLKDHMREAGDVCYADVYRDGTGVVEFVRKEDMTYAVRKL DNTKFRSHEGETAYIRVKVDGPRSP

靶点信息

研究背景	This gene encodes a member of the arginine/serine-rich splicing factor protein family. The encoded protein can either activate or repress splicing, depending on its phosphorylation state and its interaction partners. Multiple transcript variants have been found for this gene. There is a pseudogene of this gene on chromosome 13. [provided by RefSeq, Jun 2014]
------	--

基因ID	6426
基因名	SRSF1
Swiss	Q07955
别名	ASF; SF2; SF2p33; SFRS1; SRp30a

产品验证



Western blot analysis of SF2/ASF expressed in Mouse brain,Rat brain,HeLa using SF2/ASF Rabbit mAb at 1:1000. Secondary antibody: HRP Goat Anti-Rabbit IgG (H+L) at 1:5000. Lysates/proteins: 30ug per lane. Blocking buffer: 5% non-fat dry milk in TBST. Detection: ECL Enhanced Kit. Exposure time: 120s.

实验步骤

访问官网浏览详情: www.ablybio.cn