

# TSH beta Rabbit mAb

货号: **AYM31360**

## 产品信息

反应	Human
宿主	Rabbit
克隆性	Monoclonal
预测反应	
应用	WB IHC
推荐浓度	<b>WB:</b> 1:500 - 1:2000 <b>IHC:</b> 1:50 - 1:200
理论分子量	10kDa/15kDa
实测分子量	16kDa
形式	Liquid
保存条件	Store at -20°C. Avoid freeze / thaw cycles. Buffer: PBS with 0.75% BSA,50% glycerol,pH7.3.
偶联物	Unconjugated
阳性对照	
细胞定位	Secreted
纯化	Affinity purification

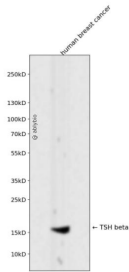
## 抗原信息

抗原信息	Recombinant fusion protein corresponding to Human TSH beta.
序列	FCIPTEYTMHIERRECAAYCLTINTTICAGYCMTRDINGKFLPKYALSQDVCTYRDFIYRTVEIPGCPLHVAPYFSYPVALSCKC GKCNTDYSDCIHEAIKTNYCTKPQKSYLVGFSV

## 靶点信息

研究背景	The four human glycoprotein hormones chorionic gonadotropin (CG), luteinizing hormone (LH), follicle stimulating hormone (FSH), and thyroid stimulating hormone (TSH) are dimers consisting of alpha and beta subunits that are associated noncovalently. The alpha subunits of these hormones are identical, however, their beta chains are unique and confer biological specificity. Thyroid stimulating hormone functions in the control of thyroid structure and metabolism. The protein encoded by this gene is the beta subunit of thyroid stimulating hormone. Mutations in this gene are associated with congenital central and secondary hypothyroidism and Hashimoto's thyroiditis. Alternative splicing of this gene results in multiple transcript variants.
基因ID	7252
基因名	TSHB
Swiss	P01222
别名	TSHB;TSH-B;TSH-BETA

## 产品验证



Western blot analysis of TSH beta expressed in human breast cancer using TSH beta Rabbit mAb at 1:1000. Secondary antibody: HRP Goat Anti-Rabbit IgG (H+L) at 1:5000. Lysates/proteins: 30ug per lane. Blocking buffer: 5% non-fat dry milk in TBST. Detection: ECL Enhanced Kit. Exposure time: 120s.

## 实验步骤

访问官网浏览详情: [www.ablybio.cn](http://www.ablybio.cn)