

# MAPKAP Kinase 2 Rabbit mAb

货号: **AYM31357**

## 产品信息

反应	Human
宿主	Rabbit
克隆性	Monoclonal
预测反应	
应用	WB
推荐浓度	<b>WB:</b> 1:500 - 1:2000
理论分子量	42kDa/45kDa
实测分子量	46kDa
形式	Liquid
保存条件	Store at -20°C. Avoid freeze / thaw cycles. Buffer: PBS with 0.75% BSA,50% glycerol,pH7.3.
偶联物	Unconjugated
阳性对照	HeLa,A-431
细胞定位	Cytoplasm,Nucleus
纯化	Affinity purification

## 抗原信息

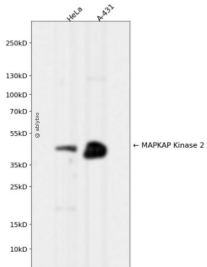
抗原信息	Recombinant fusion protein corresponding to Human MAPKAP Kinase 2.
序列	MLIRNLLKTEPTQRMTITEFMNHPWIMQSTKVPQTPLHTSRVLKEDKERWEDVKEEMTSALATMRVDYEQIKIKKIEDASNP LLLKRRKKARALEAAALAH

## 靶点信息

研究背景	This gene encodes a member of the Ser/Thr protein kinase family. This kinase is regulated through direct phosphorylation by p38 MAP kinase. In conjunction with p38 MAP kinase, this kinase is known to be involved in many cellular processes including stress and inflammatory responses, nuclear export, gene expression regulation and cell proliferation. Heat shock protein HSP27 was shown to be one of the substrates of this kinase in vivo. Two transcript variants encoding two different isoforms have been found for this gene.
基因ID	9261

基因名	MAPKAPK2
Swiss	P49137
别名	MAPKAPK2;MAPKAP-K2;MK-2;MK2

## 产品验证



Western blot analysis of MAPKAP Kinase 2 expressed in HeLa,A-431 using MAPKAP Kinase 2 Rabbit m Ab at 1:1000. Secondary antibody: HRP Goat Anti-Rabbit IgG (H+L) at 1:5000. Lysates/proteins: 30ug per lane. Blocking buffer: 5% non-fat dry milk in TBST. Detection: ECL Enhanced Kit. Exposure time: 1 20s.

## 实验步骤

访问官网浏览详情: [www.ablybio.cn](http://www.ablybio.cn)