

CTR1/SLC31A1 Rabbit mAb

货号: **AYM31354**

产品信息

反应	Human,Mouse,Rat
宿主	Rabbit
克隆性	Monoclonal
预测反应	
应用	WB
推荐浓度	WB: 1:500 - 1:2000
理论分子量	26-34kDa
实测分子量	26-34kDa
形式	Liquid
保存条件	Store at -20°C. Avoid freeze / thaw cycles. Buffer: PBS with 0.75% BSA,50% glycerol,pH7.3.
偶联物	Unconjugated
阳性对照	293T,HepG2,A-549,Mouse liver,Mouse kidney,Rat liver
细胞定位	Cell membrane,Multi-pass membrane protein
纯化	Affinity purification

抗原信息

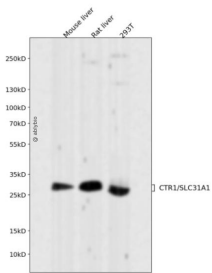
抗原信息	Recombinant fusion protein corresponding to Human CTR1/SLC31A1.
序列	MDHSHHMGMSYMDSNSTMQPSHHPTTSASHSHGGGDSSMMMMPMTFYFGFKNVELLFSGLVINTAGEMAGAFVAV FLLAMFYEGLKIARESLLRKSQVS

靶点信息

研究背景	The protein encoded by this gene is a high-affinity copper transporter found in the cell membrane. The encoded protein functions as a homotrimer to effect the uptake of dietary copper.
基因ID	1317
基因名	SLC31A1

Swiss	O15431
别名	SLC31A1; COPT1; CTR1; solute carrier family 31 member 1

产品验证



Western blot analysis of CTR1/SLC31A1 expressed in Mouse liver, Rat liver, 293T using CTR1/SLC31A1 Rabbit mAb at 1:1000. Secondary antibody: HRP Goat Anti-Rabbit IgG (H+L) at 1:5000. Lysates/proteins: 30ug per lane. Blocking buffer: 5% non-fat dry milk in TBST. Detection: ECL Enhanced Kit. Exposure time: 120s.

实验步骤

访问官网浏览详情: www.ablybio.cn