

PSMA1 Rabbit mAb

货号: **AYM31353**

产品信息

反应	Human,Mouse,Rat
宿主	Rabbit
克隆性	Monoclonal
预测反应	
应用	WB IHC IF/ICC IP FC
推荐浓度	WB: 1:500 - 1:2000 IHC: 1:50 - 1:200 IF/ICC: 1:50 - 1:200 IP: 1:20 - 1:50 FC: 1:20 - 1:50
理论分子量	29kDa/30kDa
实测分子量	30kDa
形式	Liquid
保存条件	Store at -20°C. Avoid freeze / thaw cycles. Buffer: PBS with 0.75% BSA,50% glycerol,pH7.3.
偶联物	Unconjugated
阳性对照	293T,Jurkat,HeLa,HepG2,U-251MG,SW620,Mouse liver,Mouse heart,Mouse spleen
细胞定位	Cytoplasm,Nucleus
纯化	Affinity purification

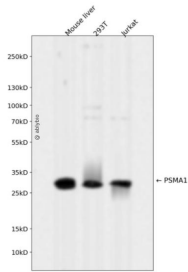
抗原信息

抗原信息	Recombinant fusion protein corresponding to Human PSMA1.
序列	MFRNQYDNDVTVWSPQGRHQIEYAMEAVKQGSATVGLKSKTHAVLVALKRAQSELAHQKILHVDNHIGISIAGLTAD ARLLCNFMRQECLDSRFVDRPLVSRSLVSLIGSKTQIPTQRYGRRPYGVGLLIAGYDDMGPHIFQTCPSANYFDCRAMSI GARSQSARTYLERHMSEFMECNLNLVKGHLRALRETLPAEQDLTTKNVSIQVIGKDLFTIYDDDDVSPFLEGLEERPQRK AQPAQPADEPAEKADPEMEH

靶点信息

研究背景	The proteasome is a multicatalytic proteinase complex with a highly ordered ring-shaped 20S core structure. The core structure is composed of 4 rings of 28 non-identical subunits; 2 rings are composed of 7 alpha subunits and 2 rings are composed of 7 beta subunits. Proteasomes are distributed throughout eukaryotic cells at a high concentration and cleave peptides in an ATP/ubiquitin-dependent process in a non-lysosomal pathway. An essential function of a modified proteasome, the immunoproteasome, is the processing of class I MHC peptides. This gene encodes a member of the peptidase T1A family, that is a 20S core alpha subunit. Alternative splicing results in multiple transcript variants encoding distinct isoforms.
基因ID	5682
基因名	PSMA1
Swiss	P25786
别名	PSMA1;HC2;HEL-S-275;NU;PROS30

产品验证



Western blot analysis of PSMA1 expressed in Mouse liver, 293T, Jurkat using PSMA1 Rabbit mAb at 1:1000. Secondary antibody: HRP Goat Anti-Rabbit IgG (H+L) at 1:5000. Lysates/proteins: 30ug per lane. Blocking buffer: 5% non-fat dry milk in TBST. Detection: ECL Enhanced Kit. Exposure time: 120s.

实验步骤

访问官网浏览详情: www.ablybio.cn