

RPL26L1 Rabbit mAb

货号: **AYM31349**

产品信息

反应	Human,Mouse,Rat
宿主	Rabbit
克隆性	Monoclonal
预测反应	
应用	WB IHC IF/ICC
推荐浓度	WB: 1:500 - 1:2000 IHC: 1:50 - 1:200 IF/ICC: 1:50 - 1:200
理论分子量	17kDa
实测分子量	17kDa
形式	Liquid
保存条件	Store at -20°C. Avoid freeze / thaw cycles. Buffer: PBS with 0.75% BSA,50% glycerol,pH7.3.
偶联物	Unconjugated
阳性对照	HeLa,293T,HepG2,A-549
细胞定位	extracellular exosome
纯化	Affinity purification

抗原信息

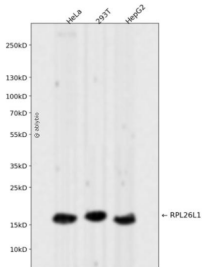
抗原信息	Recombinant fusion protein corresponding to Human RPL26L1.
序列	MKFNPFVTSDRSKNRKRHFNAPSHVRRKIMSSPLSKELRQKYNVRSMPIRKDDEVQVVRGHYKGQQIGKVVQVYRKKYVI YIERVQREKANGTTVHVGIIH

靶点信息

研究背景	This gene encodes a protein that shares high sequence similarity with ribosomal protein L26. Alternative splicing results in multiple transcript variants encoding the same protein.
基因ID	51121

基因名	RPL26L1
Swiss	Q9UNX3
别名	RPL26L1; RPL26P1; ribosomal protein L26 like 1

产品验证



Western blot analysis of RPL26L1 expressed in HeLa,293T,HepG2 using RPL26L1 Rabbit mAb at 1:1000. Secondary antibody: HRP Goat Anti-Rabbit IgG (H+L) at 1:5000. Lysates/proteins: 30ug per lane. Blocking buffer: 5% non-fat dry milk in TBST. Detection: ECL Enhanced Kit. Exposure time: 120s.

实验步骤

访问官网浏览详情: www.ablybio.cn