

# TOMM22 Rabbit mAb

货号: **AYM31343**

## 产品信息

反应	Human
宿主	Rabbit
克隆性	Monoclonal
预测反应	
应用	WB IHC IF/ICC IP FC
推荐浓度	<b>WB:</b> 1:500 - 1:2000 <b>IHC:</b> 1:50 - 1:200 <b>IF/ICC:</b> 1:50 - 1:200 <b>IP:</b> 1:20 - 1:50 <b>FC:</b> 1:20 - 1:50
理论分子量	15kDa
实测分子量	18kDa
形式	Liquid
保存条件	Store at -20°C. Avoid freeze / thaw cycles. Buffer: PBS with 0.75% BSA,50% glycerol,pH7.3.
偶联物	Unconjugated
阳性对照	HeLa,HepG2,K-562
细胞定位	Mitochondrion outer membrane,Single-pass membrane protein
纯化	Affinity purification

## 抗原信息

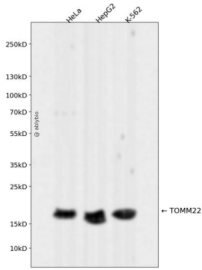
抗原信息	Recombinant fusion protein corresponding to Human TOMM22.
序列	MAAAVAAAGAGEPQSPDELLPKGDAEKPEEELEEDDDEELDETLSERLWGLTEMPERVRSAAAGATFDLSLFVAQKMYRF SRA

## 靶点信息

研究背景	The protein encoded by this gene is an integral membrane protein of the mitochondrial outer membrane. The encoded protein interacts with TOMM20 and TOMM40, and forms a complex with several other proteins to import cytosolic preproteins into the mitochondrion.
------	---

基因ID	56993
基因名	TOMM22
Swiss	Q9NS69
别名	TOMM22;1C9-2;MST065;MSTP065;TOM22

## 产品验证



Western blot analysis of TOMM22 expressed in HeLa, HepG2, K-562 using TOMM22 Rabbit mAb at 1:1000. Secondary antibody: HRP Goat Anti-Rabbit IgG (H+L) at 1:5000. Lysates/proteins: 30ug per lane. Blocking buffer: 5% non-fat dry milk in TBST. Detection: ECL Enhanced Kit. Exposure time: 120s.

## 实验步骤

访问官网浏览详情: [www.ablybio.cn](http://www.ablybio.cn)